



PROLAUNCH MANUAL



P3 WOULD LIKE TO THANK YOU FOR YOUR PURCHASE OF THE P3 PROLAUNCH. OBVIOUSLY, YOU CARE ABOUT YOUR GOLF GAME AND WANT TO IMPROVE YOUR GOLF GAME. THE PROLAUNCH WILL PROVIDE YOU THE 'CAUSE & EFFECT' OF YOUR GOLF SWING BETTER THAN ANY OTHER SYSTEM IN ITS PRICE POINT.

YOU ARE NOW WELL ON YOUR WAY TO IMPROVING YOUR GOLF SWING AND GOLF GAME.

ENJOY YOUR P3 PROLAUNCH !!

INCLUDED IN THE BOXES:



Ball Monitor Unit



Trigger Cable



Power Supply



USB 2.0 Cable



Platform



Velcro Kit

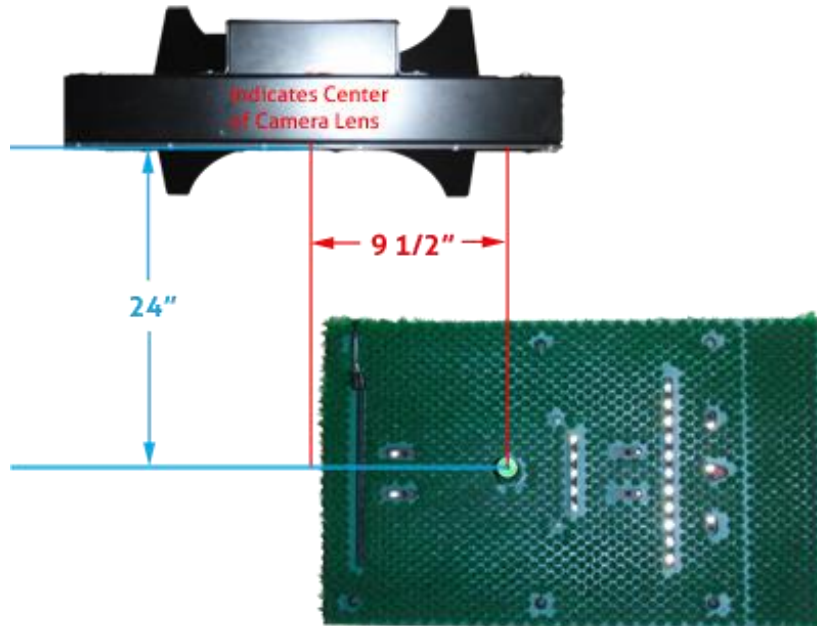


PROLAUNCH MANUAL



SETUP INSTRUCTIONS:

1. If you are using a Stance Mat, setup the Velcro kit as follows. If not, proceed to step 2.
 - a. Attach the Velcro to the bottom of the Stance Mat per the attached procedure.
 - b. Secure the Platform to the Stance Mat via the Velcro.
 - c. Proceed to step 3.
2. The Ball Monitor Unit MUST be in a precise location to get accurate readings. It MUST be facing perpendicular to the sensor unit. The camera lens should be 24" from the midline of the sensor unit and 9 1/2" forward in the ball flight.



3. Now that your monitor is in the proper location, we can connect the cables. You should have 3 cables coming from the monitor:
 - a. Power Supply – Connect to the power jack of the monitor and to a surge suppressor.
 - b. USB 2.0 Cable – Connect to the USB Port on the monitor and to any USB port on your computer. Note: The LEDs will flash when you plug the USB Cable to unit/computer (depending on which is plugged in last).
 - c. Trigger Cable – Connect to the trigger (audio) jack on the monitor. The trigger piece then needs to be inserted into the exit row of your sensor unit. Be sure it is pushed to the end of the row once it is in the light guide slot. See cable in image above.



PROLAUNCH MANUAL



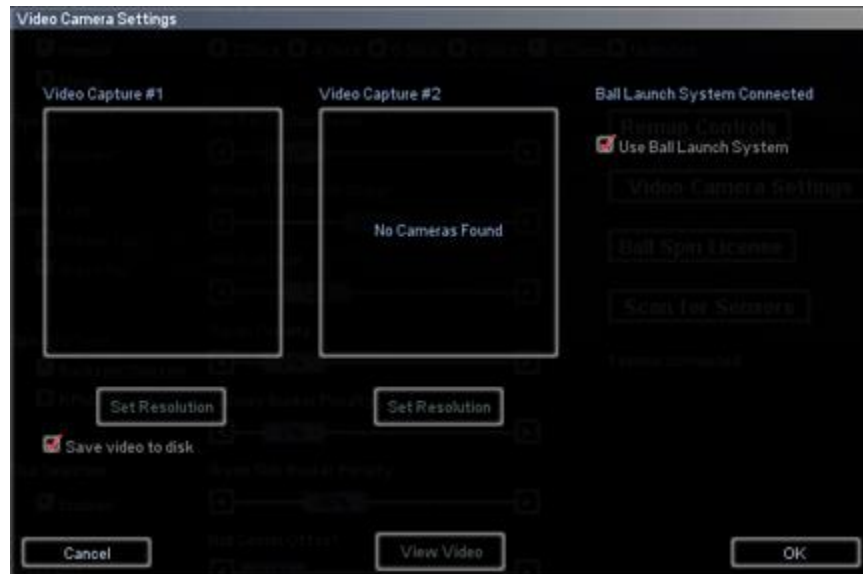
4. Your P3 ProLaunch should now be ready to operate.
5. Open the ProGolf Software.



PROLAUNCH MANUAL



6. Go to Options->Game->'Video Camera Settings'. You should see the following:



If you do not see the "Ball Launch System Connected", then one of the following is an issue:

- You do not have a version of the software capable of running the ProLaunch. Please update to the latest version of the software. You can do so by going to www.p3proswing.com. Check under Support->Downloads.
- Your Ball Monitor is not being recognized. Please check the troubleshooting section of this manual.

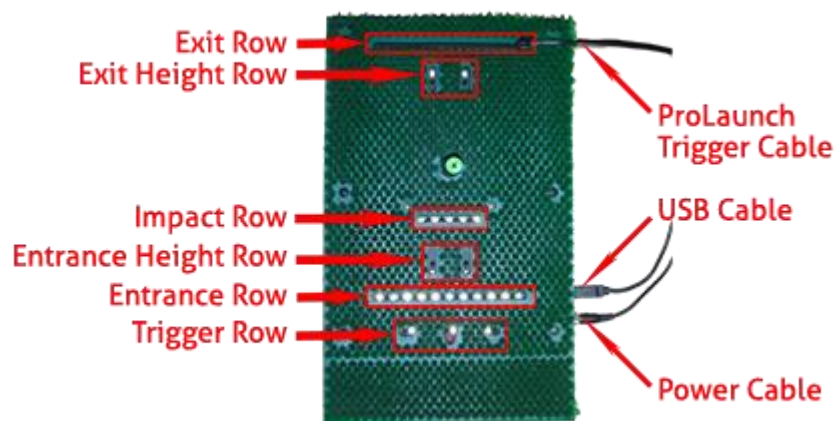
7. Your P3 ProLaunch is ready for use. Go to any ProGolf screen (Driving Range, Practice, etc).
8. For the purposes of this example, we have gone to the Driving Range menu option.
9. As you get to the Driving Range, you will see the following image in the lower right corner:



PROLAUNCH MANUAL



10. Note the empty video window.
11. To test to assure your ProLaunch is functional, take a swing over the first row of optics only (the trigger row). This swing can be forward or backwards. If swinging forward, do not cross the remainder of the rows or a swing will record.





PROLAUNCH MANUAL



12. This should cause the ProLaunch unit to trigger (and LEDs flash), but not record a swing. It should result in the following image:



13. This confirms that the unit triggered and the camera activated.
14. Now you're ready to take your first full swing. Once you do so, the next image should be your result:



PROLAUNCH MANUAL



Note that the golf balls are circled in green to confirm the software picked them up and identified the proper information. Your image should have between 6-8 golf balls present. They do not all need to be circled for the system to work, but that would be expected result. If you do not get that many ball images, you should go to 'Customizing the ProLaunch'. You'll also note that the Speed Launch & Rotation boxes at the top of the image box are now green. That means that the software was able to measure these values. If a value cannot be calculated, the system will default to the calculated values.



PROLAUNCH MANUAL



SYSTEM REQUIREMENTS & SPECIFICATIONS:

- ProLaunch with all accessories (as outlined in the
- P3 ProSwing Swing Analyzer Unit
- ProGolf Software (including computer that meets the system requirements for the ProGolf Software)
- Minimal Lighting conditions.

Like the P3 ProSwing Swing Analyzer Unit, the P3 ProLaunch operates on infrared lighting. However, unlike the P3 ProSwing Swing Analyzer Unit, the ProLaunch also uses a camera. This means that the lighting is critical to obtaining results. Thus, overhead lighting can cause the strobed infrared lighting to get 'washed out' and thus does not leave enough contrast between the ball fiducials (markings on the ball) and the ball itself.

CUSTOMIZING YOUR PROLAUNCH:

The ProLaunch system works on a strobe system to determine the number of images that will appear in the video feed. This is setup by club for each user (changes to distance when using your chipping club to allow proper chipping images). Since many golfers swing at different club speeds (thus resulting in different ball speeds), you may need to 'tweak' the system so you are achieving optimal images in your video feed. As explained earlier, the optimal image will contain 6-9 ball images.

There are 2 ways to change the strobe speed:

SINGLE SHOT CHANGE:

Above the video window, you will find a slider that allows you to change the strobe speed. You can change this slider to change the strobe speed. A higher strobe speed will result in less golf ball images in your image. Why would you do that? You would increase the strobe rate to eliminate golf balls overlapping as this will cause the system to have trouble identifying the fiducials. If you decrease the strobe rate, you should see more golf ball images in your final image.

Note that this single shot change should only be used if you are having trouble getting the proper amount of images for a shot or to test to see what your image will look like. It will reset to the default club setting after each shot.

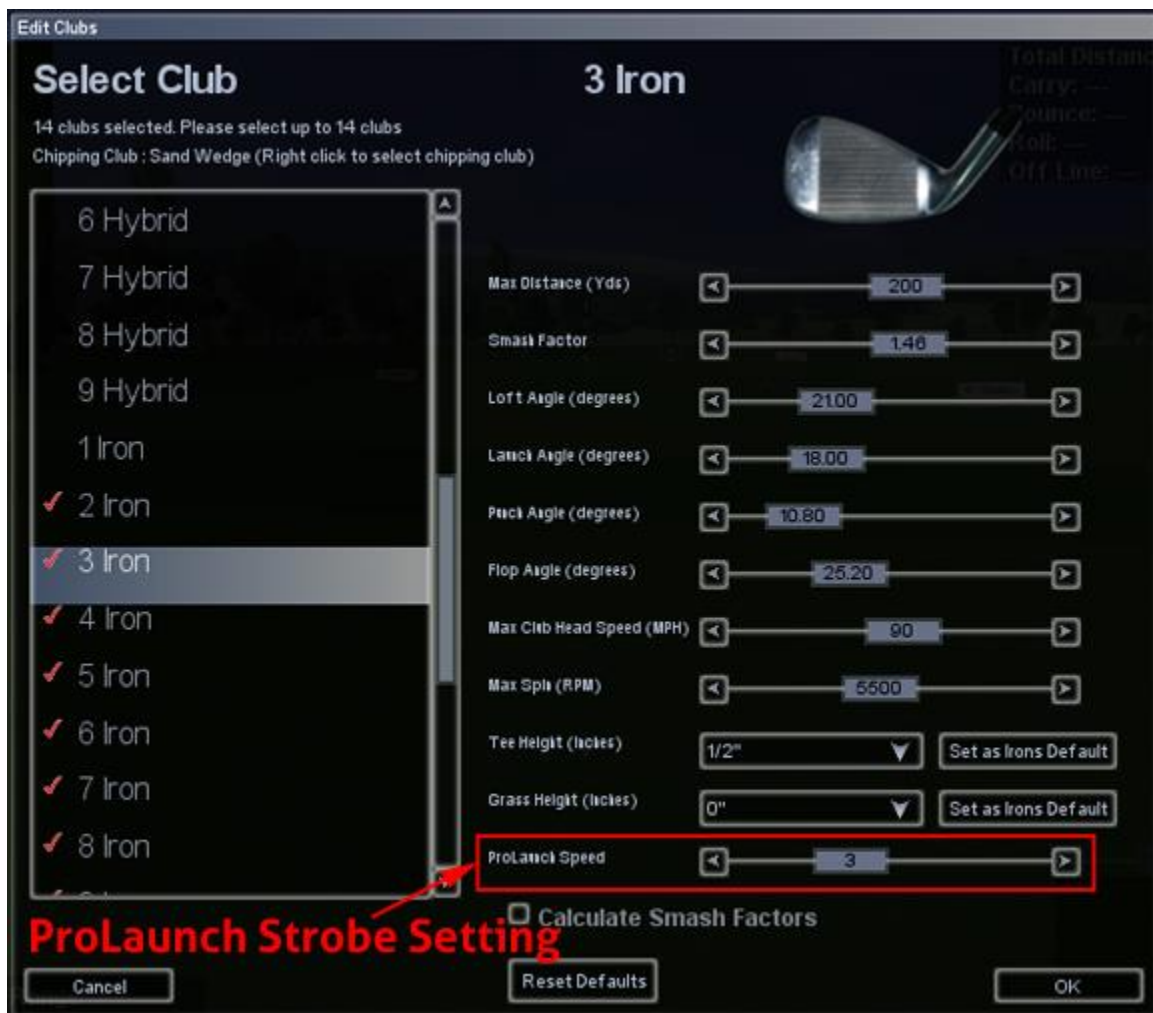
PERMANENT CLUB CHANGE:



PROLAUNCH MANUAL



Once you have identified the proper strobe rate for your normal swing, you will want to edit your club profile to include the proper setting. This is easily done at the Practice->Driving Range with your Player Profile. If you simply click on Driving Range, be sure your profile is the default profile or your changes will be to the wrong player. Once at the Driving Range (with the correct profile), you can click on Options->`Edit Clubs`. Be sure you have the proper club (that you want to change) selected.



NOTE: This setting will not appear unless you have the ProLaunch Monitor attached and active.

Beyond that, there should be no other changes necessary for the system to pick up your swings and provide accurate data.



PROLAUNCH MANUAL



TROUBLESHOOTING YOUR PROLAUNCH:

If setup properly, your ProLaunch should work without issue. However, there are times when software and hardware simply do not want play well together. For those cases, there are the following troubleshooting hints:

SENSOR NOT BEING RECOGNIZED:

Any time you are not getting proper shot information with your ProLaunch, you should check a few things:

1. DO YOU HAVE THE SOFTWARE PROPERLY SETUP FOR THE PROLAUNCH?

To check this, go to Options->Game->Video Camera Settings and assure there is a check in the `Use Ball Launch System` checkbox. If the box is not available, then your computer is not recognizing the unit.

2. IS YOUR PROLAUNCH UNIT BEING RECOGNIZED BY YOUR COMPUTER?

You will need to open Device Manager to assure your computer recognizes your device. To Open Device Manager, do the following:

WINDOWS 7:

- a. Left-click the Windows start button
- b. Right-click on `Computer`
- c. Select `Manage`
- d. Click `Device Manager` in the left pane

WINDOW 8 OR 10:

- a. Right-Click the Windows Start Button
- b. Select `Device Manager`

Now that you're in Device Manager, there are 2 items you should check for. The first is the hub within the unit. This should be identified as a "COM Port" listed

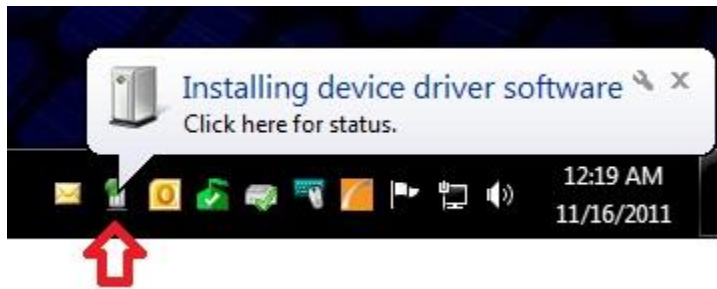


PROLAUNCH MANUAL



under `Ports (COM & LPT)`. The second item you should notice is the e-con Camera listed under `Imaging Devices`.

If either of these is missing, you can first try to unplug the USB Cable and plug it back in. Give your computer a few minutes to detect the drivers and post these in Device Manager. You may see an image similar to this if Windows needs to load drivers:



You will want to click on this and wait until all drivers are loaded, before continuing.

If this does not resolve your issue, you can right-click on the COM Port listing and uninstall the driver. Then restart your computer. The driver should reinstall automatically.

SENSOR GETTING IMAGE, BUT NOT DETECTING STATS:

If you are getting an image of the swing and the ball in flight, but the `Speed Launch` & `Rotation` indicators are remaining red it would be due to one of the following issues:

1. BALL NOT PRESENT

Although the P3 ProSwing Swing Analyzer will work without any ball, the ProLaunch requires the pre-printed golf balls that came with your ProLaunch.

2. FIDUCIALS NOT VISIBLE

The pre-printed balls provided with your ProLaunch are a wearable item. Over time the fiducials may wear off the ball. When this happens, the ProLaunch does not get enough data to make its calculations. Thus, you need to use a new ball.

3. TOO MUCH LIGHT

As previously discussed, the ProLaunch is light sensitive due to the infrared strobe. Lighting directly downward on the unit can wash out the infrared lighting and overexpose the ball. This makes the contrast between the white ball and the black



PROLAUNCH MANUAL



fiducials lower and thus the unit cannot process the data. Lower the amount of direct lighting and you should see that your ProLaunch will get the desired results.