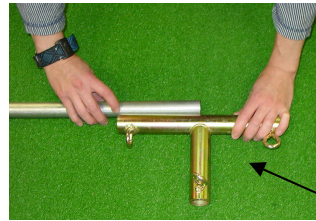
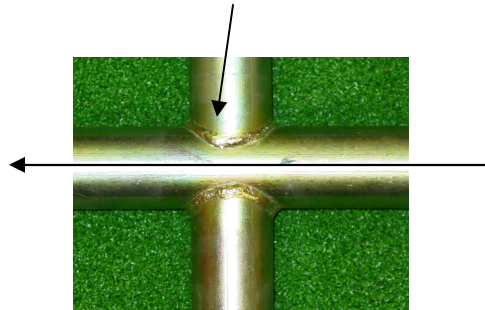


# 12' Cage Installation Instructions

## Important Notes

- 1) The 5' long pipes are the for vertical sections only. The cage is 10' tall.
- 2) The FX cross fittings should be oriented with the slide through running front to back.



- 3) When placing the pipe in the FC, FT & FX fittings, first lay the pipe next to the fitting, estimate where the pipe should stop to be centered. Either mark with a pen or hold your finger on the estimated stop point. Insert the pipe to this point and tighten the screw eye. Centering the pipes in the FC, FT & FX fittings will help keep the cage square.

## Bill Of Materials:

Item Description	Qty
6' Pipe	22
5' Pipe	8
18" Pipe	5
4'6" Pipe	3
FC	7
FL	8
F4	4
FT	6
FX	3
Side Guy Wire (black)	4
Rear Guy Wire (red)	2
12" Toggle Bungee	14
6" Toggle Bungee	9
8" Hook Bungee	12
Projector Mount Receiver	1



Bungee Cords



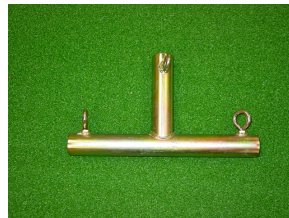
FC



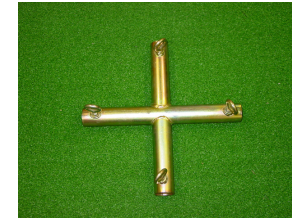
FL



F4



FT



FX



Side Guy Wires  
(black bands)



Rear Guy Wires  
(red bands)

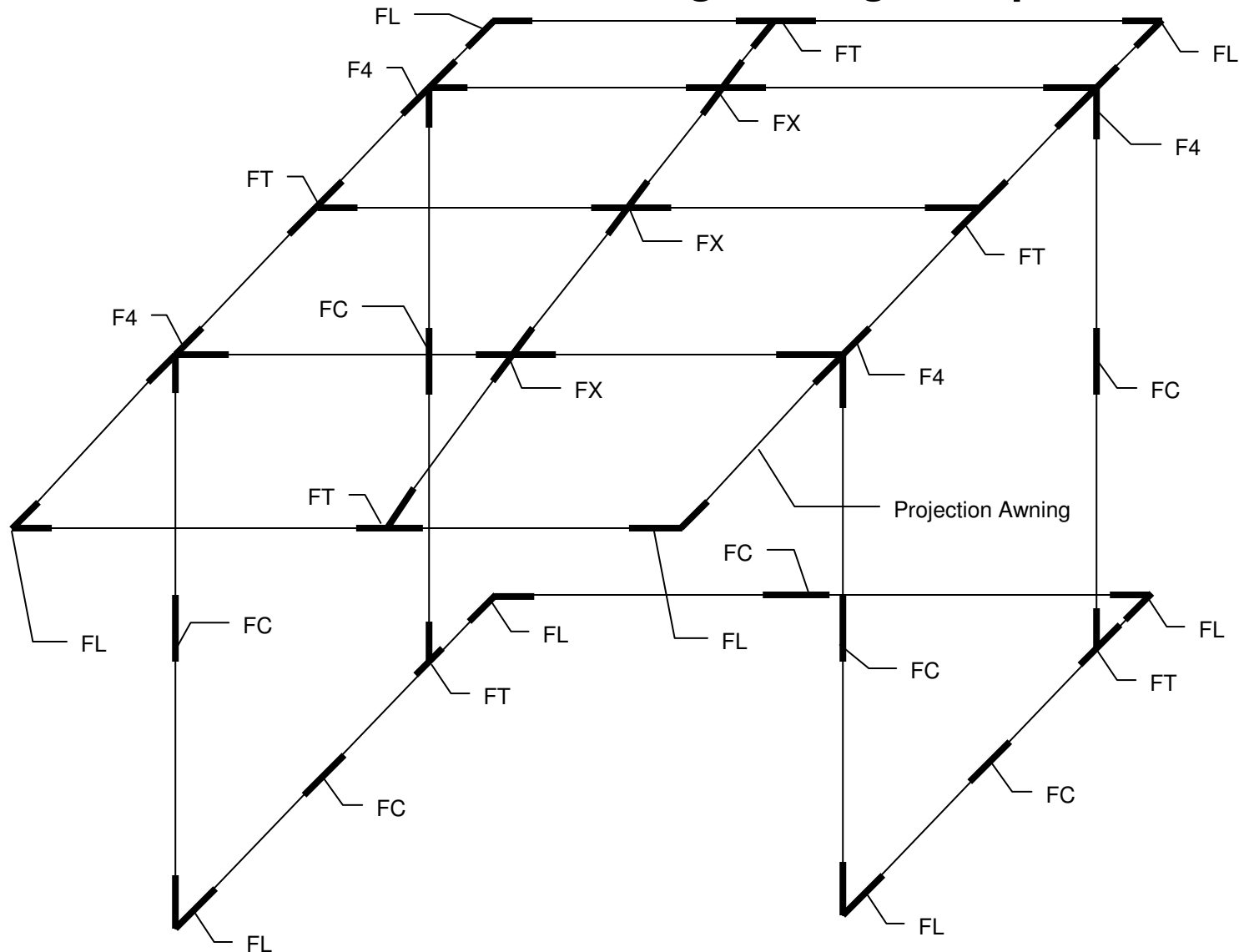


Projector Mount  
Receiver

Will accept projector mounts  
With 1 1/2" NPT Pipe Threads

Pipes not Pictured

# Overview of Cage Fittings & Pipes



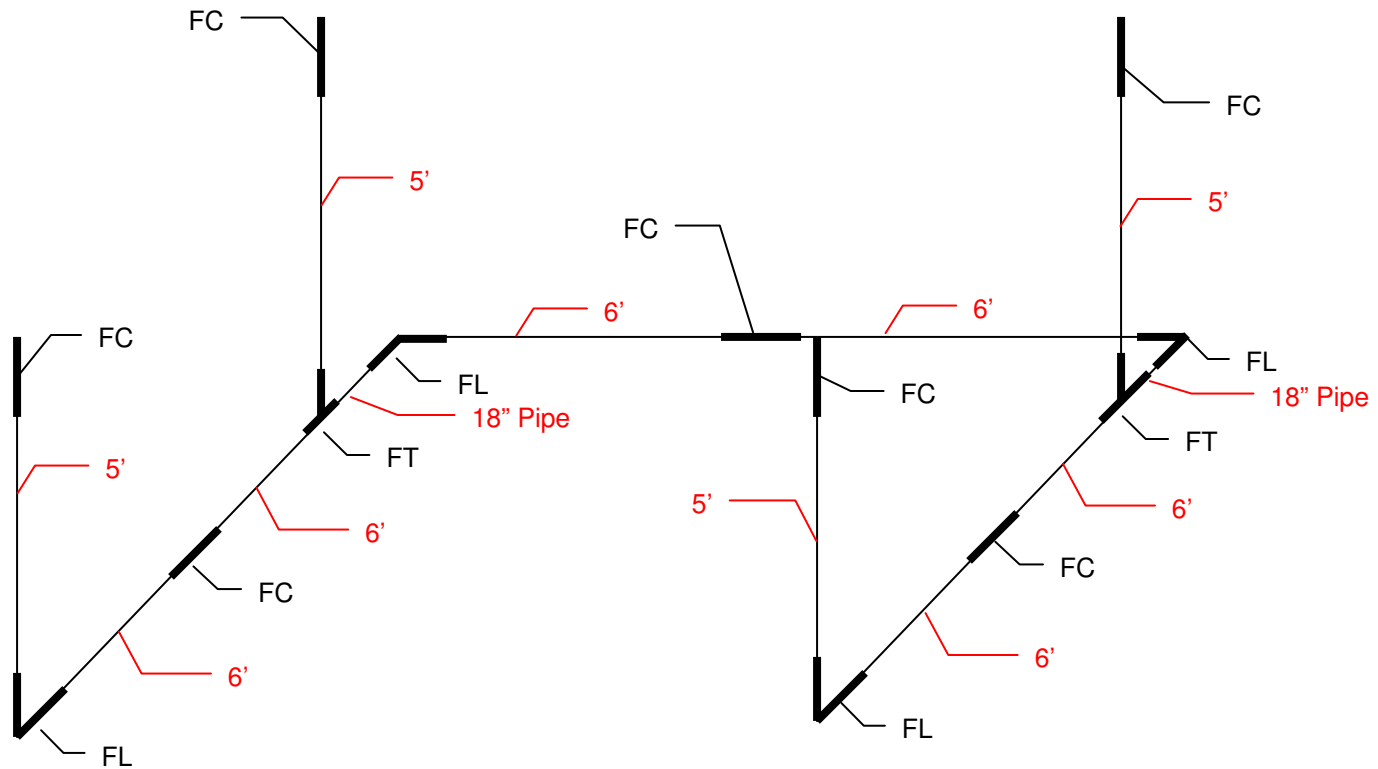
- 8 vertical pipes are 5' long, the cage is 10' tall
- 22 horizontal pipes are 6' long, the cage is 12' wide & 12' deep
- 3 pipes extend out 4'6" from the front of the cage to create the projection awning
- 5 short pipes extend the floor depth 18" behind the screen for safety purposes

## Notes:

# Step 1

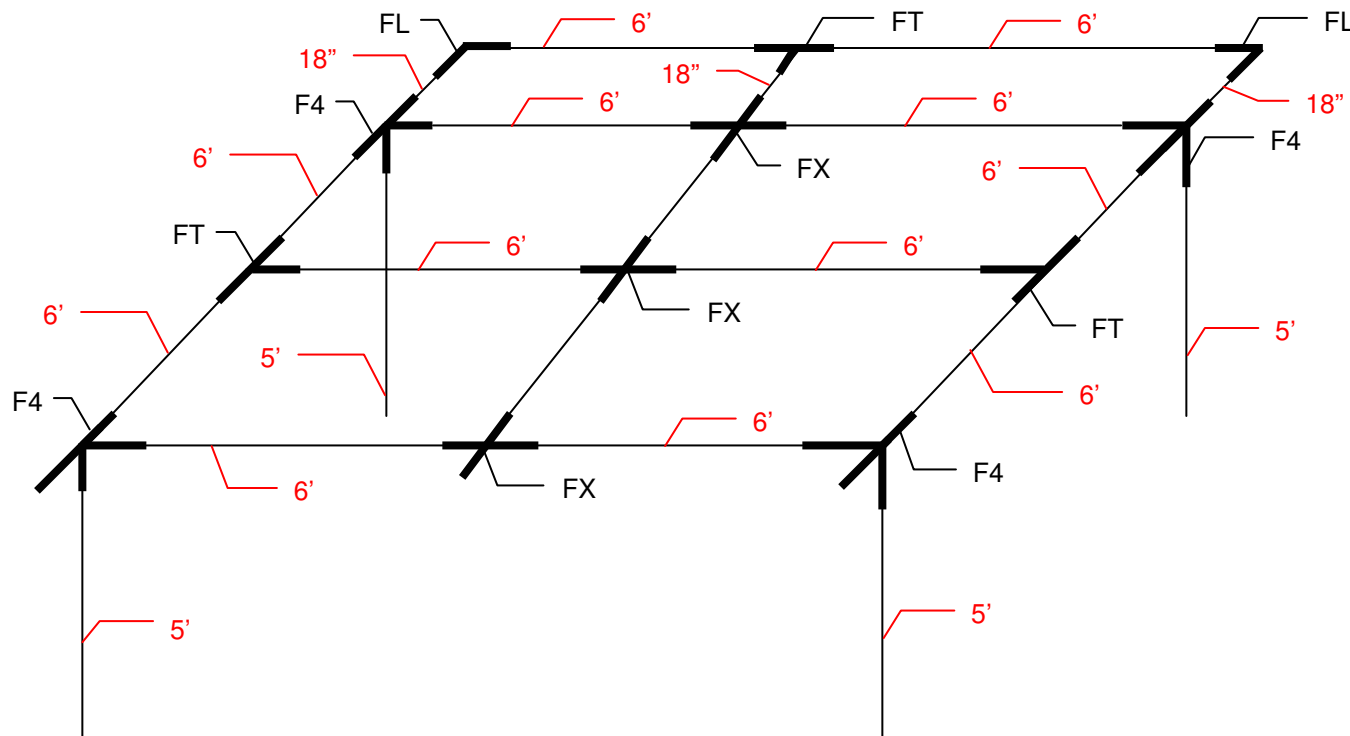
## Build Bottom Frame

(Place the frame in the location you plan on using it.)



## Step 2

### Build Top Frame Without Front Projection Awning



**Notes:** On FX & FT fittings, make sure the screw eyes are pointing up. They should not protrude down into the cage.

It is easier to attach the projection screen and cage cover to the top frame before lifting it into place on the bottom frame. Otherwise, everything must be done using ladders.

Wait until the top frame is lifted into the bottom frame before assembling the front projection awning. If this is installed before lifting the frame the front will be very heavy and hard to lift.

## Step 3

### Attach Guy Wires and Projection Screen to Top Frame

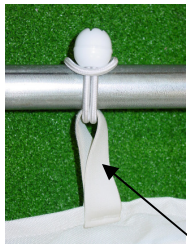
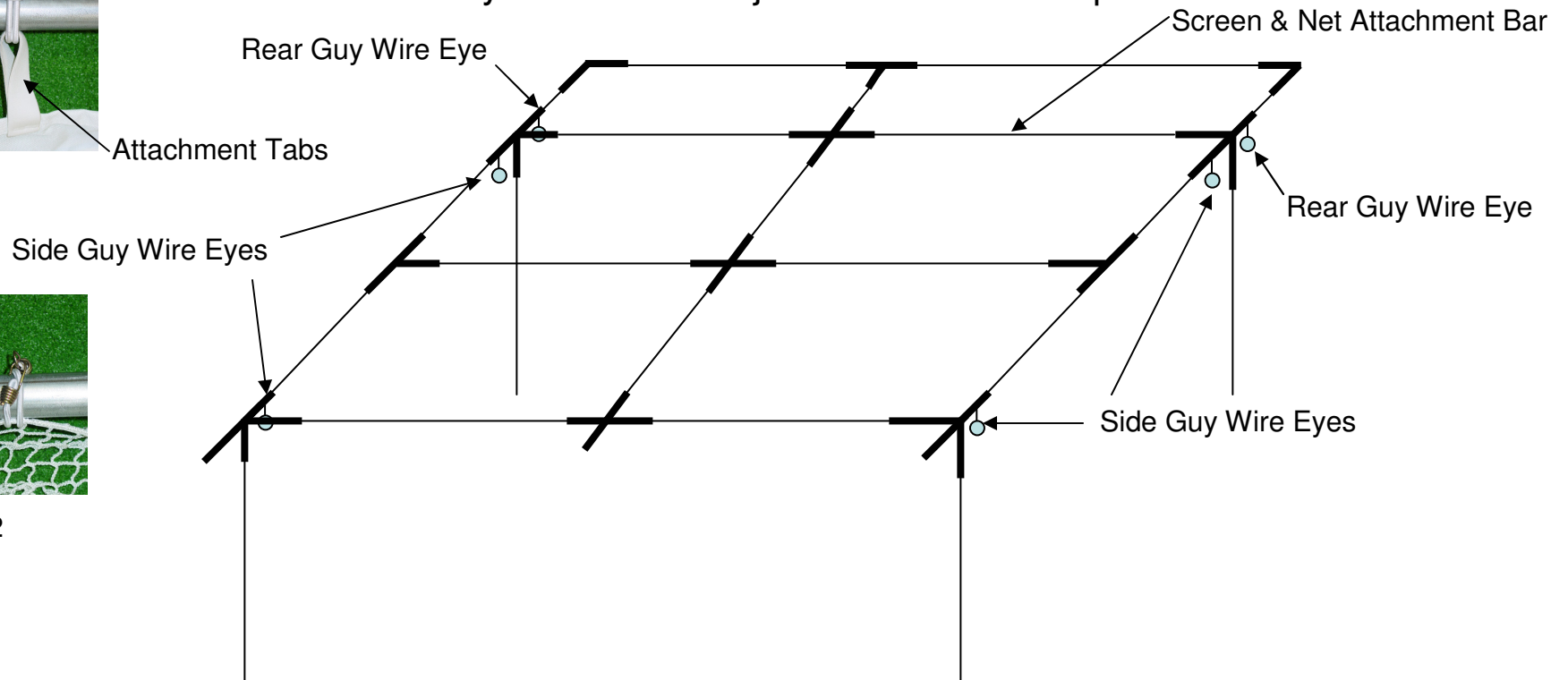


Fig 1

Attachment Tabs



Fig 2



1. Unfold projection screen inside the rear of the cage frame.
2. Place the screen and netting at the back of the frame with the netting on top and attachment tabs facing up and the netting facing into the cage.
3. Using provided 6" toggle bungee cords (fig 1). Secure attachment tabs to the Net Attachment bar
4. The netting that comes off the top edge of the projection screen has a rope cord spaced off of the screen by one foot. This cord should also be attached to the "screen and net attachment bar" using 8" bungees with hooks. See fig 2

## **Step 4**

### **Install Cage Cover on Top Frame**

1. Unfold the cage cover.
2. Locate the P3proSwing Logo. This is the center of the front of the cage.
3. Gather the fabric from the back of the cover to the front on each side (this requires 2 people).
4. Keep in mind the awning is not present so there should be 4'6" of extra fabric at the front.
5. With a person on each side of the cage, walk the cover back unfurling the fabric as you go.
6. Place the fitted corners around the two rear cage corners.
7. Allow the back flap to drape over the rear of the cage.
8. At the front of the cage fold the extra fabric for the projection awning over the top of the cage front to allow access to the fittings after the cage frame has been lifted.
9. This is a good time to secure the wiring for the projector to the frame. Allow extra wiring for the proper distance and strain relief of the projector mounting location.

(note: secure projector wires to frame using electrical tape to keep them out of the swing path.)

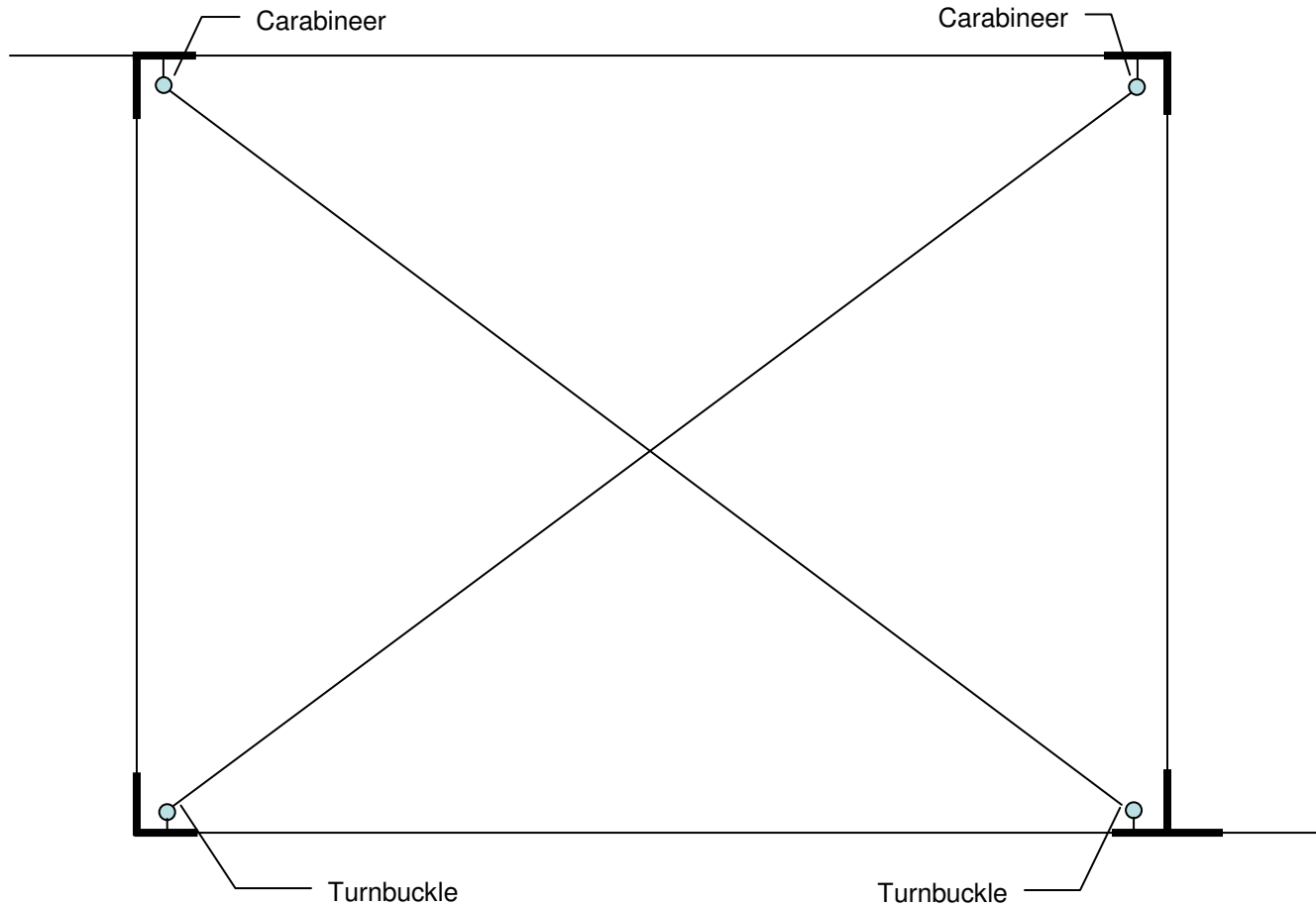
## **Step 5**

### **Lift the Top Frame Into the Bottom Frame**

- 1) Lift top frame by corners and set it into bottom frame (four people will be optimal for this operation)
- 2) Make sure all fasteners are fully seated and secure before proceeding.

## Step 6

### Install Side Guy Wires (Both Sides)

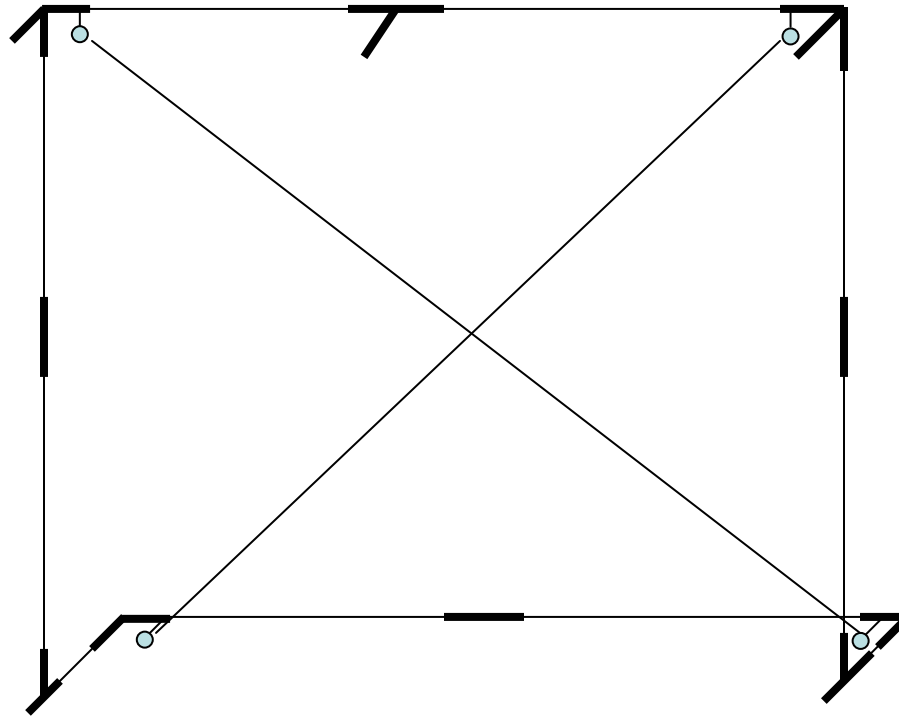


- 1) Attach side guy wires with carabineers at the top on the screw eyes as shown.
- 2) Fully open and attach turnbuckle to bottom screw eyes as shown.
- 3) Do not tighten turnbuckles yet!



## Step 7

### Install Rear Guy Wires



- 1) Attach rear guy wires with carabineers at the top on the screw eyes as shown.
- 2) Fully open and attach turnbuckle to bottom screw eyes as shown.
- 3) Tighten turnbuckles of all 6 wires starting with the rear so there is tension in wire, do not over tighten or cages will not be square.
- 4) Tighten turnbuckles on sides after finished tightening rear turnbuckles.

## Step 8

### Finish Installation of the Projection Screen

- 1) Attach screen to the rear vertical pipes using tabs and 12" toggle bungee cords (fig 4).
- 2) Position the ladder at a front corner of the cage, take the netting by the corresponding front corner and bring the rope cord up to the corresponding corner fitting. Use an 8" hook bungee to attach the netting to the frame (fig 3).
- 3) Repeat the last step with the opposite front corner making sure that the netting is centered.
- 4) Attach the netting to the frame between all of the fitting locations forward from the screen along the top side horizontal bars that run from the front to back of the cage.
- 5) Attach the netting to the front vertical bars using the 8" hook bungees.
- 6) Make sure all of the netting & screen is touching the floor by at least 2" to ensure ball catchment.
- 7) Make any necessary adjustments.

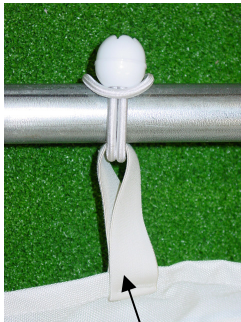


Fig 1



Fig 2



Fig 3

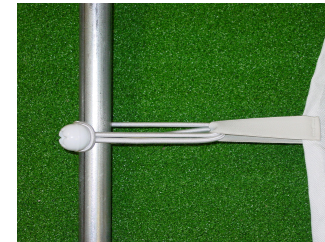


Fig 4

Attachment Tabs

## Step 9

### Assemble and Install Projection Awning

1. Insert 4'6" pipes into the F4 & FX fittings on the front of the cage.
2. Slide projector mount receiver onto middle bar and temporarily secure out of the way using the thumb screw.
3. Assemble the front cross bar
4. Attach the front cross bar to the projector awning frame.
5. Fold the remaining fabric from the cage cover over the awning frame.
6. Make any adjustment to straighten the cover.

