



Dear Customer,

Thanks for your purchase of the P<sup>3</sup>ProSwing Champions Package. Enclosed you will find all the necessary documents to setup your package. Once you have setup the package, you can access the program via the P<sup>3</sup>ProSwing Golf icon on your desktop. All necessary software has been pre-installed and configured for you. The User Manuals for the P<sup>3</sup>ProSwing Swing Analysis software and Virtual Course software are installed on the computer and you will find an icon for each on the desktop.

If you still have questions, after referencing the manuals, you can contact our Technical Support Department.

---

P<sup>3</sup>ProSwing Technical Support  
Monday – Friday from 9 AM to 4 PM EST  
207-824-7411  
[tech@p3proswing.com](mailto:tech@p3proswing.com)

---

For purchasing supplies or other products, you can contact our Sales Department.

P<sup>3</sup>ProSwing Sales Department  
Monday – Friday from 9 AM to 4 PM EST  
1-877-737-7646  
[sales@p3proswing.com](mailto:sales@p3proswing.com)

Thanks again for your purchase,

P<sup>3</sup>ProSwing Management

## Shipment Contains:

**Box 1:** Screen for 4' Cage

**Box 2:** Cage Cover

**Box 3:** Pipe #1 For Hitting Center

10 Pipes @ 4'

**Box 4:** Pipe #2 For Hitting Center

10 Pipes @ 4'

**Box 5:** Pipe #3 For Hitting Center

4 Pipes @ 4'6" & 4 Pipes @ 2'

**Box 6:** Fittings For Hitting Center

12 FC, 2 FL, 2 F4, 2 FT, 4 F3, (See cage instructions for description)

**Box 7:** Versa Stance Mat

Mat and Channel Guards

**Box 8:** Dual Stance Mat

Mat and Velcro

**Box 9:** Putting Mat

Mat and Velcro

**Box 10:** Pre-Configured Computer

Computer, Mouse and Keyboard

**Box 11:** Video Capture Cameras

Cameras & USB Extension Cables

**Box 12:** Projector Pack For Hitting Center

Projector, Power Strip, Extension Cord, SVGA Cable, SVGA Adapter

**Box 13:** Pro Plus Sensor Unit 1

Welcome Kit with instructions, software and information, P3ProSwing sensor pad, Power Supply, USB Cable, Goodie Bag, Club Tape, Friction Tee

# Champions Package Setup Overview Instructions



1

Setup Cage using the enclosed 4' Cage Instructions.  
(Boxes 1 through 6)

2

Setup stance & putting mats per instructions.  
(Boxes 7 through 9)

3

Setup Computer System.  
(Box 10 through 12)

4

Install projector to projector mount on cage.  
(Box 13)

5

Install sensor unit in mat and attach to computer.  
(Box 14)

If you have any questions or problems, you can contact:

**P<sup>3</sup>ProSwing Technical Support**

**Monday – Friday: 9AM to 4PM Eastern Time**

**207-824-7411**

**[tech@p3proswing.com](mailto:tech@p3proswing.com)**

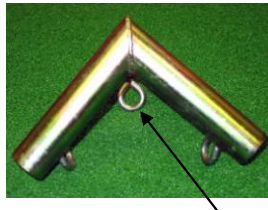
## 4' Cage Installation Instructions



# 4' Cage Installation Instructions

## Important Notes (If you don't read these, your cage will not be square)

- 1) The F3 corner fittings are not symmetrical. It is important to use them all in the same manner or the cage will not be square.



- Look closely at the fitting. It is composed of a mitered corner joint with a butt joint attaching the third leg.
- The butt joint is the leg that must be used in the vertical orientation consistently on all four F3 fittings.



- 2) When placing the pipe in the FT fittings, first lay the pipe next to the fitting, estimate where the pipe should stop to be centered. Either mark with a pen or hold your finger on the estimated stop point. Insert the pipe to this point and tighten the screw eye. Centering the pipes in the FT fittings will help keep the cage square.

Bill Of Materials:

Item Description	Qty
4' Pipe	20
4'6" Pipe	4
2' Pipe	4
F4	2
FC	12
FL	2
F3	4
FT	2
12" Toggle Bungee	6
6" Toggle Bungee	9
8" Hook Bungee	4



FC



F4



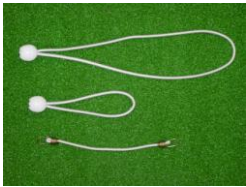
FL



FT



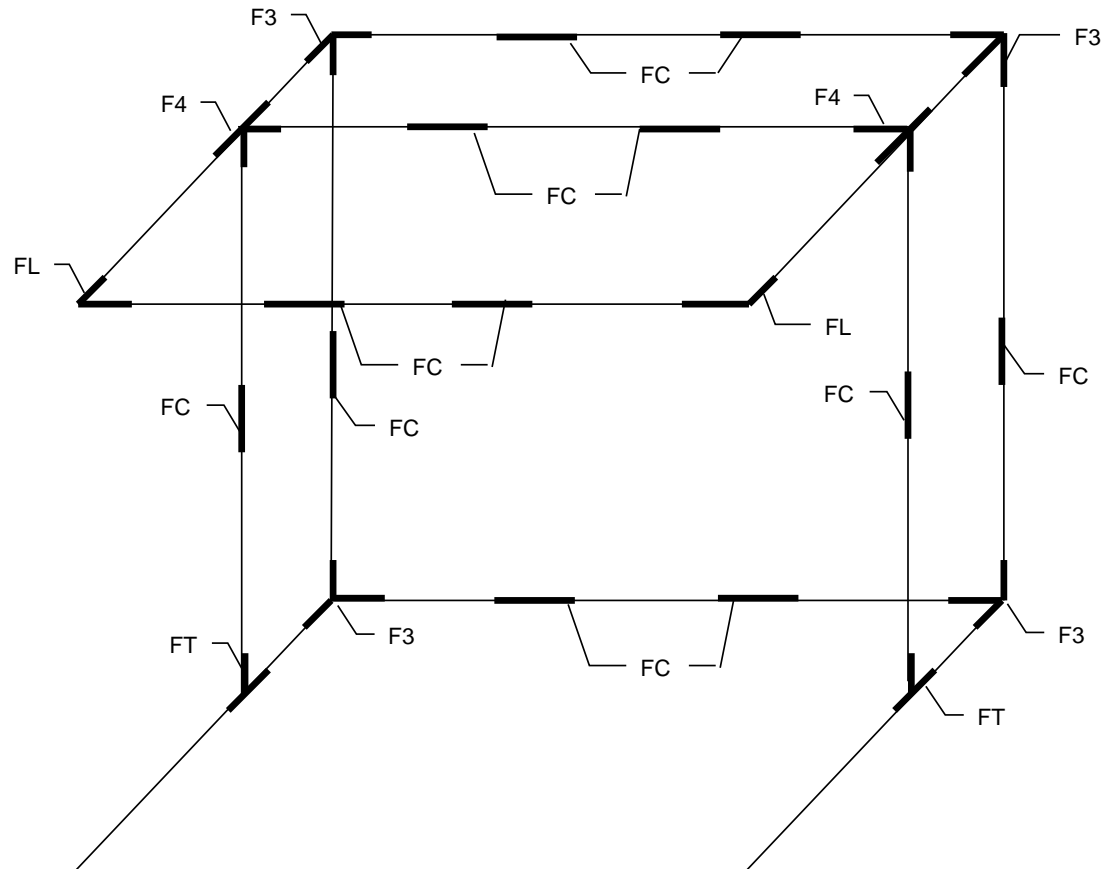
F3



Bungee Cords

Pipes not Pictured

## Overview of Cage Fittings & Pipes



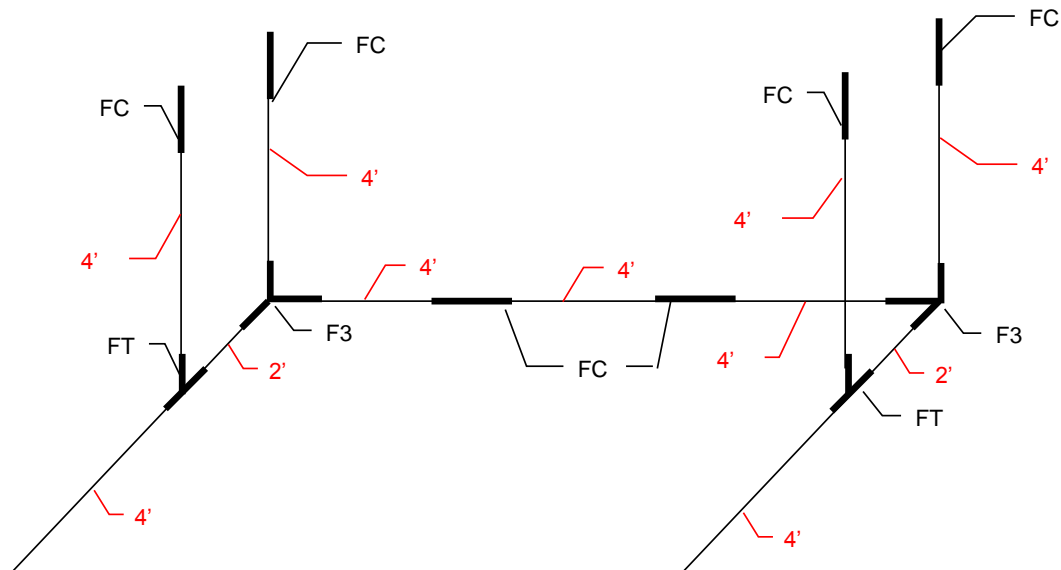
### Notes:

- 14 horizontal pipes are 4' long, the cage is 12' wide
- 4 Vertical pipes are 4' long and 4 vertical pipes are 5' long (the cage is 9' tall)
- 2 short pipes extend the floor depth 2' behind the screen for safety purposes

## Step 1

### Build Bottom Frame

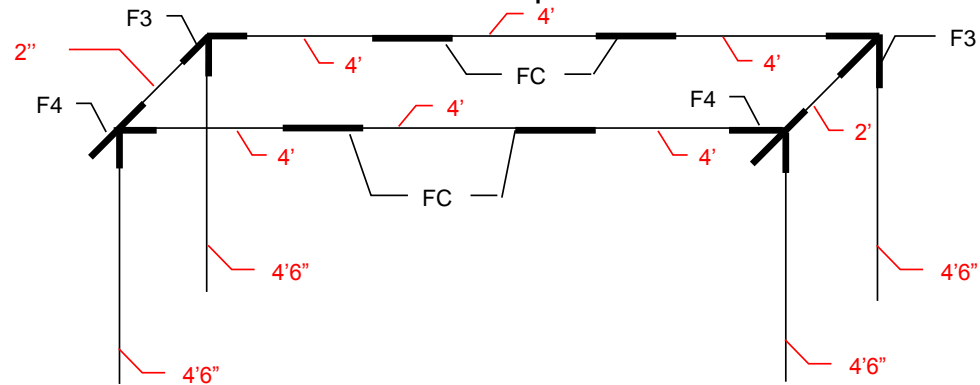
(Place the frame in the location you plan on using it.)





## Step 2

### Build Top Frame



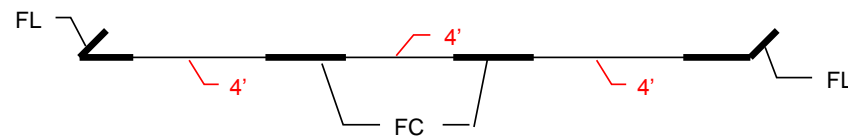
**Note:** On FC fittings, make sure the screw eyes are pointing up. They should not protrude down into the cage.

## Step 3

- 1) Lift top frame by corners and set it into bottom frame (Two people will be optimal for this operation)
- 2) Make sure all fasteners are secure before proceeding.

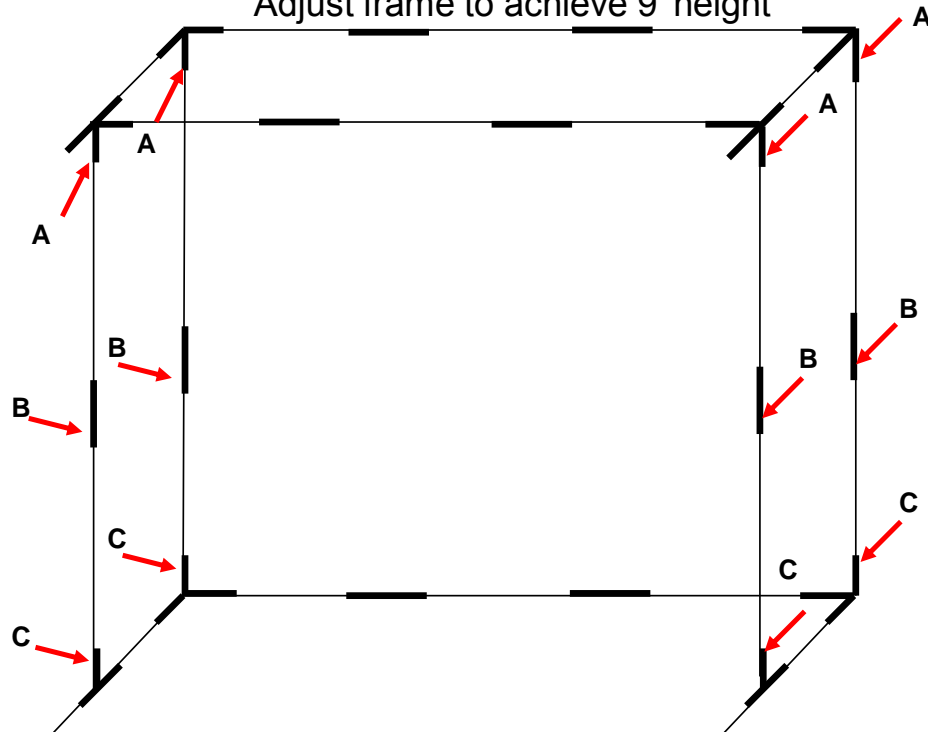
## Step 4

### Build Front Cross Bar



## Step 5

Adjust frame to achieve 9' height



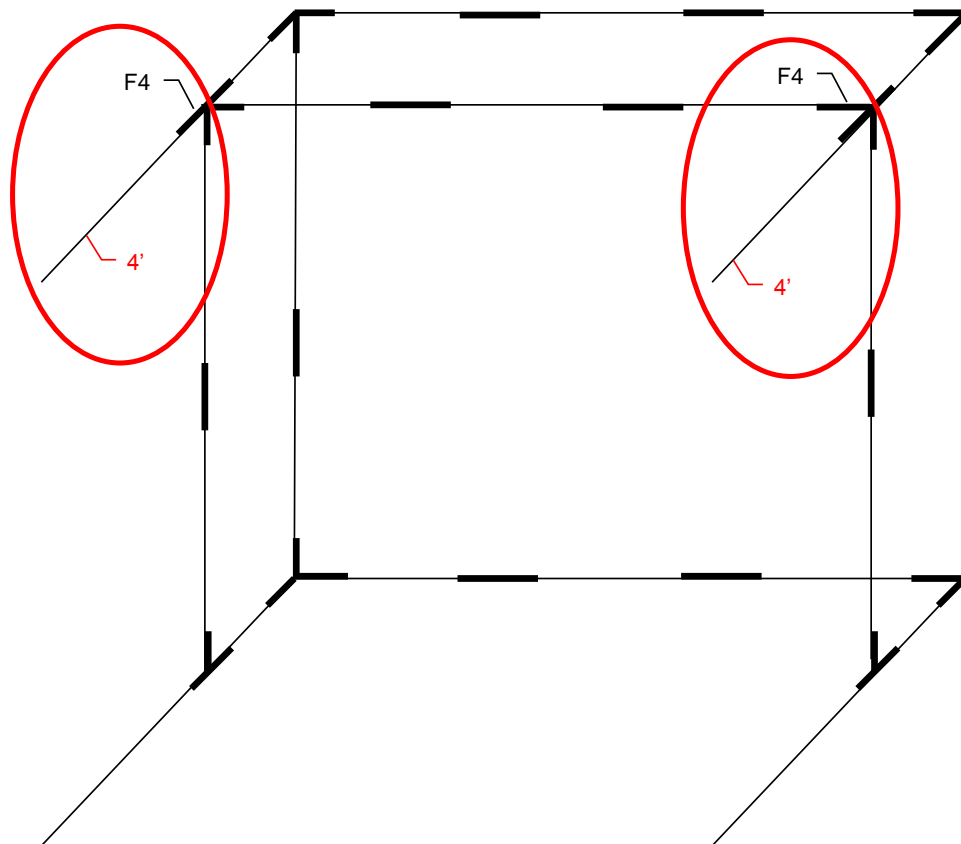
Loosen eyes at specified points one set at a time, working from the top (A) to the bottom (C).

Raise the frame by a maximum of 2" at each location. (Note: It is helpful to mark the pipe before you raise it so you can tell how much it has been raised.)

Do Not Raise the frame more than 8" or so that the projection screen is not touching the floor by at least 3".

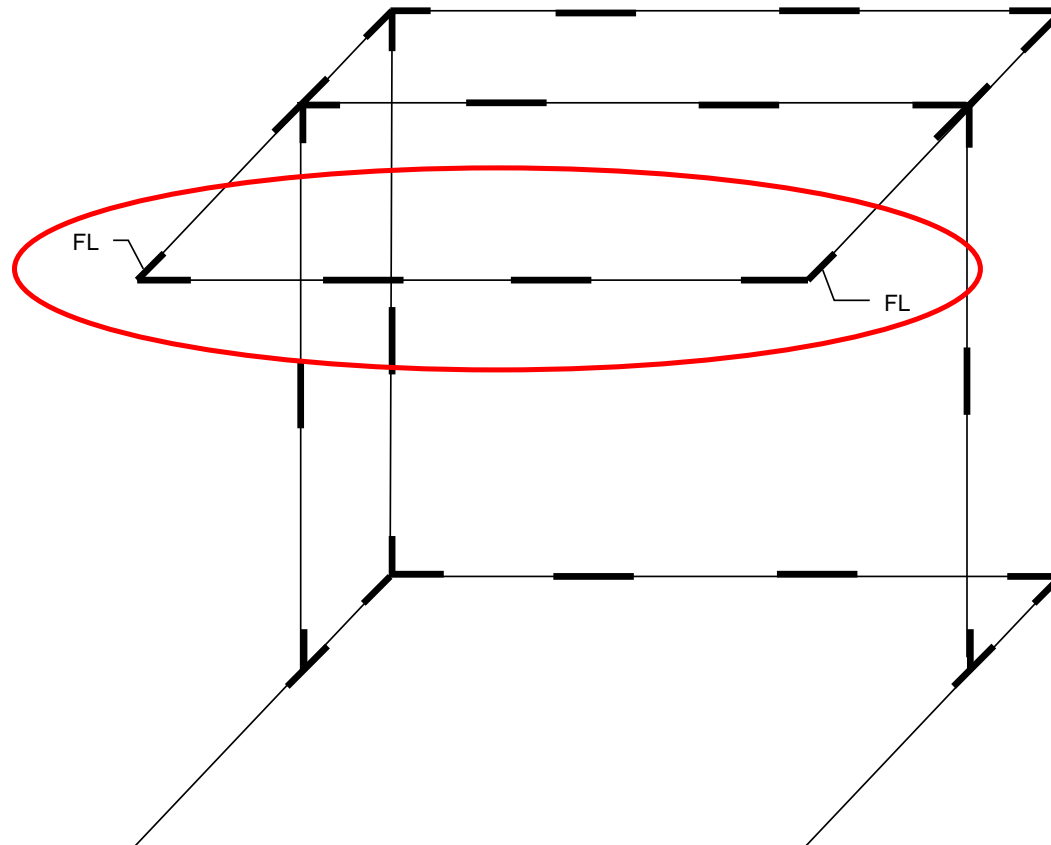
## Step 6

Attach Net Extension Poles to Top Frame

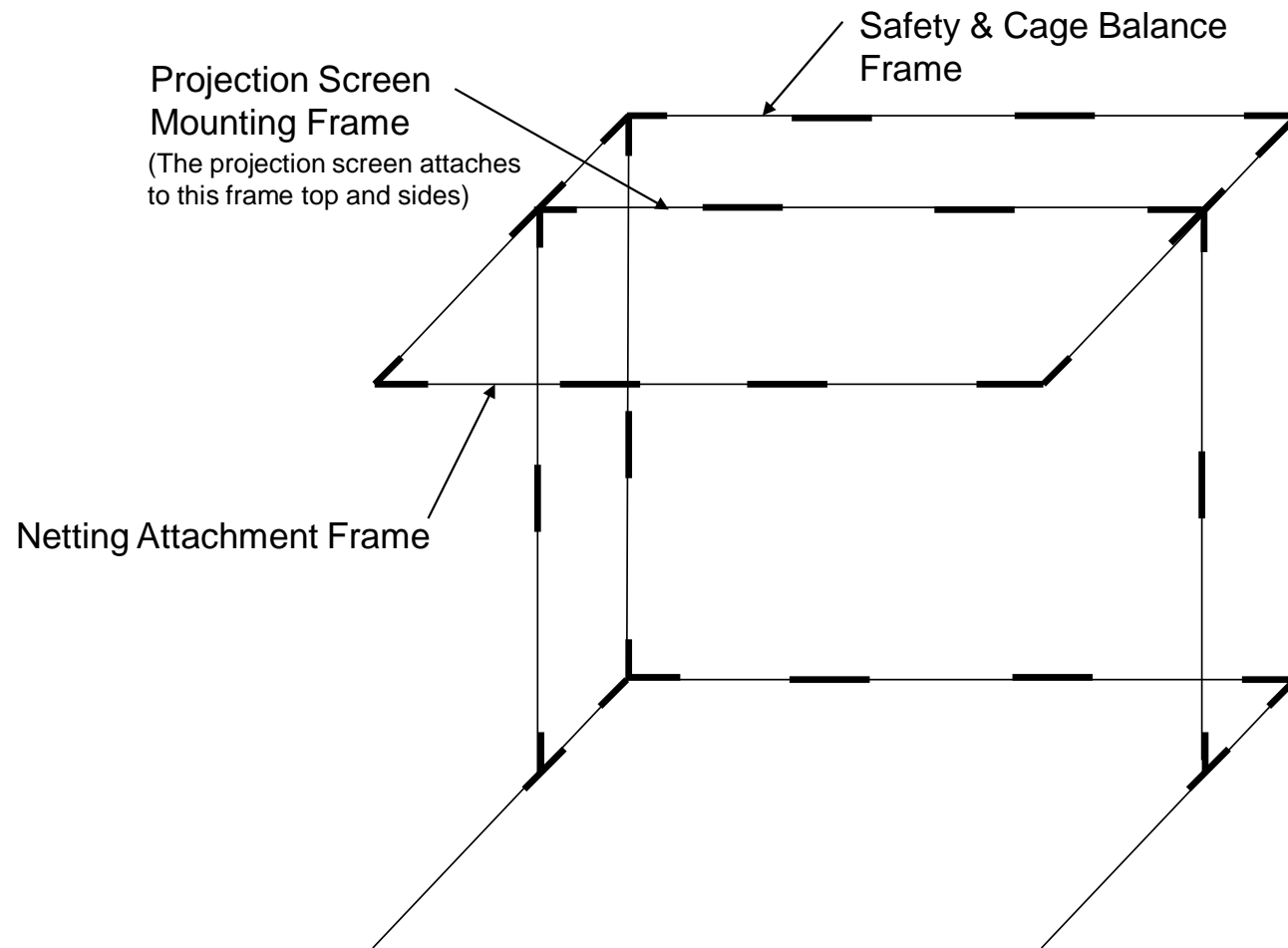


## Step 7

Attach Front Cross Bar (you built this in step 4)



**Figure A**



## Step 8

### Install Projection Screen

- 1) Unfold projection screen inside of the cage.
- 2) Place the screen and netting at the back of the projection screen mounting frame (see figure A on previous page) with the netting on top and attachment tabs facing up.
- 3) Lift the screen up to the projection screen mounting frame top bar and attach using provided 6" toggle bungee cords (fig 1).
- 4) Attach screen to the vertical pipes of the projection screen mounting frame using tabs and 12" toggle bungee cords (fig 2).
- 5) Position the ladder at a front corner of the cage, take the netting by the corresponding front corner and bring it up to the corresponding corner fitting of the net attachment frame (see figure A on previous page) Use an 8" hook bungee to attach the netting to the frame (fig 3).
- 6) Repeat the last step with the opposite corner making sure that the netting is centered.
- 7) Attach the netting to the netting attachment frame (fig 4).
- 8) Make sure all the netting & screen are touching the floor by at least 2" to ensure ball catchment.
- 9) Make any necessary adjustments.



Fig 1



Fig 2



Fig 3



Fig 4

Attachment Tabs

## Completed Cage



We recommend to ceiling mount your projector a minimum of 12' from the screen. To completely fill the screen with an image distances will vary according to the throw of your projector.

# Champions Package Mat Installation Guide



1

Identify the location for your Stance Mats (Versa Mat & Dual Mat). Be sure they are far enough away from the screen so the golfer is not struck by a ball, but not so far back that the user will strike the projector with their swing.

2

Follow the enclosed instructions to setup the Versa & Dual Mat. **NOTE:** The P3ProSwing logo (on the Versa Mat) should be closest to the screen.

3

Setup the Putting Strip per the Putting Strip Velcro Installation instructions enclosed.

4

Your finished mat system should look like the image below:



If you have any questions or problems, you can contact:

**P<sup>3</sup>ProSwing Technical Support**

**Monday – Friday: 9AM to 4PM Eastern Time**

**207-824-7411**

**[tech@p3proswing.com](mailto:tech@p3proswing.com)**





## Versa & Dual Mat Velcro™ Installation

The Velcro™ (AKA hook & loop fastener) included in this package is to hold together the Versa Stance Mat and the Dual Stance Mat you purchased for your P<sup>3</sup>ProSwing.

Included with the Dual Stance Mat is:

4 pieces of LOOP (fabric with adhesive backed tape) that are 20" long and 2" wide

2 piece of HOOK (plastic with no adhesive backed tape) that is 20" long and 4" wide

- Flip the Versa Stance Mat over so that the foam is facing up
- Flip the Dual Stance Mat over so that the foam is facing up and place it in the correct position lined up with the Versa Stance Mat on the side with the P<sup>3</sup>ProSwing unit cutout.
- **Notice:** The Dual Stance Mat has a cutout through the foam only that allows the wires from the P<sup>3</sup>ProSwing to exit through the front of the Dual Stance Mat. The Dual Stance Mat needs to be positioned so that the wires exit the Dual Stance Mat facing in the direction of the ball flight.
- Make sure that the foam is clean and dry before applying LOOP tape.
- Once the 2 mats are in the correct position, take 2 pieces of LOOP tape and remove the backing exposing the adhesive.
- Place 1<sup>st</sup> and 2<sup>nd</sup> pieces on the Versa Stance Mat. The Strip should be started at the corner of the mat and run out close to the wire cutout in the middle of that edge. Press firmly along the length of the LOOP tape to ensure good adhesion.
- Repeat above step for the pieces on the Dual Stance Mat.
- Move the Dual Stance Mat away from the Versa Stance Mat.
- Apply the 2 HOOK pieces over the LOOP on the Right Hitting Mat making sure that ½ of the HOOK strip is overhanging the edge of the right mat and press firmly along the length of the hook & loop fastener.
- Flip the Versa Stance Mat over right-side-up.
- Place Dual Stance Mat in position next to the Versa Stance Mat and press Dual Stance Mat firmly in place on the hook strip that is beyond the edge of the Versa Stance Mat.

You are now ready to use the Dual Stance Mat and Versa Stance Mat combination.





## Putting Strip Velcro™ Installation

The Velcro™ (AKA hook & loop fastener) included in this package is to hold together the Putting Strip your other Stance Mat(s) you purchased for your P<sup>3</sup>ProSwing.

Included with the Putting Strip is:

**2** pieces of LOOP (fabric with adhesive backed tape) that are 10" long and 2" wide

**1** piece of HOOK (plastic with no adhesive backed tape) that is 10" long and 4" wide

- Flip the Putting Strip over so that the foam is facing up and place it in the correct position lined up with the P<sup>3</sup>ProSwing unit cutout.
- **Notice:** The Putting Strip has a direction line printed on it that is not centered. Ensure that the line on the Putting Strip is properly aligned with your other stance mat line(s).
- Make sure that the foam is clean and dry before applying LOOP tape.
- Once the Putting Strip is in the correct position, take 1 piece of LOOP tape and remove the backing exposing the adhesive.
- Place 1<sup>st</sup> piece on the Putting Strip centered along the edge closest to the Stance Mat and press firmly.
- Remove backing exposing glue on the 2<sup>nd</sup> piece of LOOP tape and it on the Stance Mat lined up with the piece previously installed on the Putting Strip.
- Move the Putting Strip away from the Stance Mat.
- Place the HOOK strip over the LOOP tape on the Stance Mat making sure that ½ of the hook strip is overhanging the edge of the Stance Mat and press in firmly.
- Flip the Stance Mat over Right side up.
- Place Putting Strip in position lined up with the direction line on the Stance Mat and press Putting Mat firmly in place.

You are now ready to use the Putting Strip and Stance Mat combination.



# P<sup>3</sup>ProSwing Pre-configured Computer Setup Instructions



1

Identify an ideal location for your computer & touch screen. Note that this must be within 15' of your sensor pads. It is also recommended that this location be behind the ball location.

2

Connect the projector & touch screen cables using the instructions in the Cloning Instructions enclosed.

3

Connect the applicable USB Cables (from touch screen, sensor units, keyboard, mouse, SmartDongle, speakers and cameras) based on what you purchased to any available USB Ports on the computer. It is strongly recommended that you connect the cameras to the upper USB Ports.

4

Turn the computer on.

5

All applicable P<sup>3</sup>ProSwing software (including drivers for the P<sup>3</sup>ProSwing and peripherals purchased) and other necessary software have been pre-installed on the computer.

6

If you do not get the same image on both the monitor and projector, follow the instructions in the Cloning Instructions.

If you have any questions or problems, you can contact:

**P<sup>3</sup>ProSwing Technical Support**

**Monday – Friday: 9AM to 4PM Eastern Time**

**207-824-7411**

**[tech@p3proswing.com](mailto:tech@p3proswing.com)**

# Cloning the Touchscreen to the Projector

*(for when only 1 is displaying the desktop)*

The easiest way to avoid having to do this, is to be sure that both the Touch Screen monitor cable and the Projector cable are plugged into the computer prior to starting the system. If at any time you start the system with only 1 display attached, it will lose the 'cloning' information and you will have to follow this procedure to reset it.

## Connecting to the computer:

First – Let's be sure you have connected the Projector & Monitor to the computer properly. Generally when you install a video card into a computer, the onboard video adapter is disabled. So both the projector & monitor must be plugged into the installed video card (see image to right).

Note that some computers and/or devices will require the use of a DVI-to-VGA adapter to make the appropriate connection(s). See image below for a sample of this adapter:

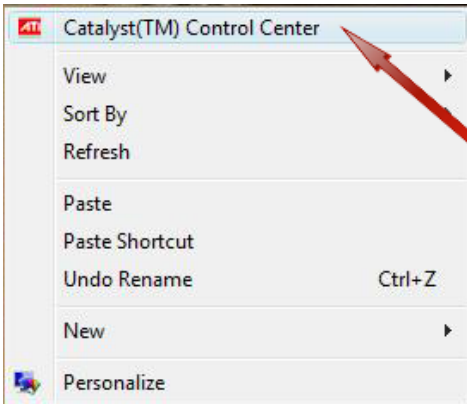


## Connecting to the projector:

Be sure that when you connect to the projector that you are connected to the 'Computer 1 In' connection. You should also press the 'Computer 1' button on the remote. You should see an image in the upper right corner of your projection screen that will say 'Computer 1'. It will, generally, tell you if it is not receiving a signal by putting 'No Input' under the 'Computer 1' indicator.

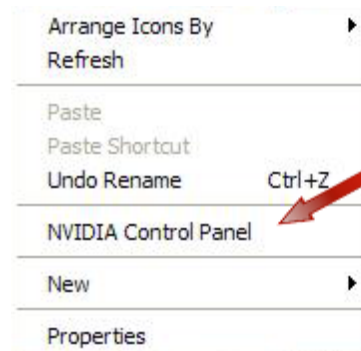
## Finding your Video Card Controls:

When you right-click on the desktop (somewhere that does not have an icon) you will see an option for either the 'ATI Catalyst Control Center' or 'Nvidia Control Panel' based on which video card is installed in your particular system. Follow the instructions below to clone the 2 displays so they are identical.



Select this Option.

For computers with an ATI Video Card



Select this Option

For computers with an nVidia Video Card

## Instruction Links:

[ATI Catalyst Control Center - Basic Mode](#)

[ATI Catalyst Control Center - Advanced Mode](#)

[nVidia Control Panel - Option 1](#)

[nVidia Control Panel - Option 2](#)

## ATI Catalyst Control Center (known as CCC) – Basic Mode:

The image shows three sequential screenshots of the ATI Catalyst Control Center (CCC) Basic Mode setup wizard, with red callout boxes providing instructions for each step.

**Screenshot 1: Welcome to the ATI Catalyst™ Control Center**

What would you like to use?

- ☒ **Basic [Easy Setup Wizards and Quick Settings]**  
Provides both step-by-step assistance and Quick Settings for changing your display setup, and other common tasks.
- ☐ **Advanced**  
Allows you to configure all of the many available settings of your ATI graphics product.

☐ Don't show this page again.  
You can choose between "Basic" [Easy and Quick] or "Advanced" at any time.

Click Next to continue

Buttons: Exit, Next >

Callout: Select Basic Mode (points to the Basic radio button)

Callout: Then Press Next (points to the Next > button)

**Screenshot 2: What Would You Like to Do?**

Select an Easy Setup Wizard or Quick Settings, then click Go.

Easy Setup Wizards | Quick Settings | Information Center

Click on the Go button to start the Wizard.

[Setup my display configuration](#)

This Wizard will take you through all the steps to set up your display configuration to your own preferences. Up to 5 steps may be involved.

Buttons: Advanced ..., Go >, < Back, Exit

Callout: Verify this is set to Setup my display configuration (points to the Setup my display configuration link)

Callout: Then press the Go button (points to the Go > button)

**Screenshot 3: Available Display Devices**

You can show your computer desktop on one or more displays at the same time.

The following display devices are connected to your ATI graphics product.

Which would you like to use?

Choose Main Display:

- ☒ Analog Monitor (ET1715L-8CWA)
- ☐ Analog Monitor (NP610Series)

Choose Second Display:

- ☐ Analog Monitor (ET1715L-8CWA)
- ☒ Analog Monitor (NP610Series)
- ☐ None

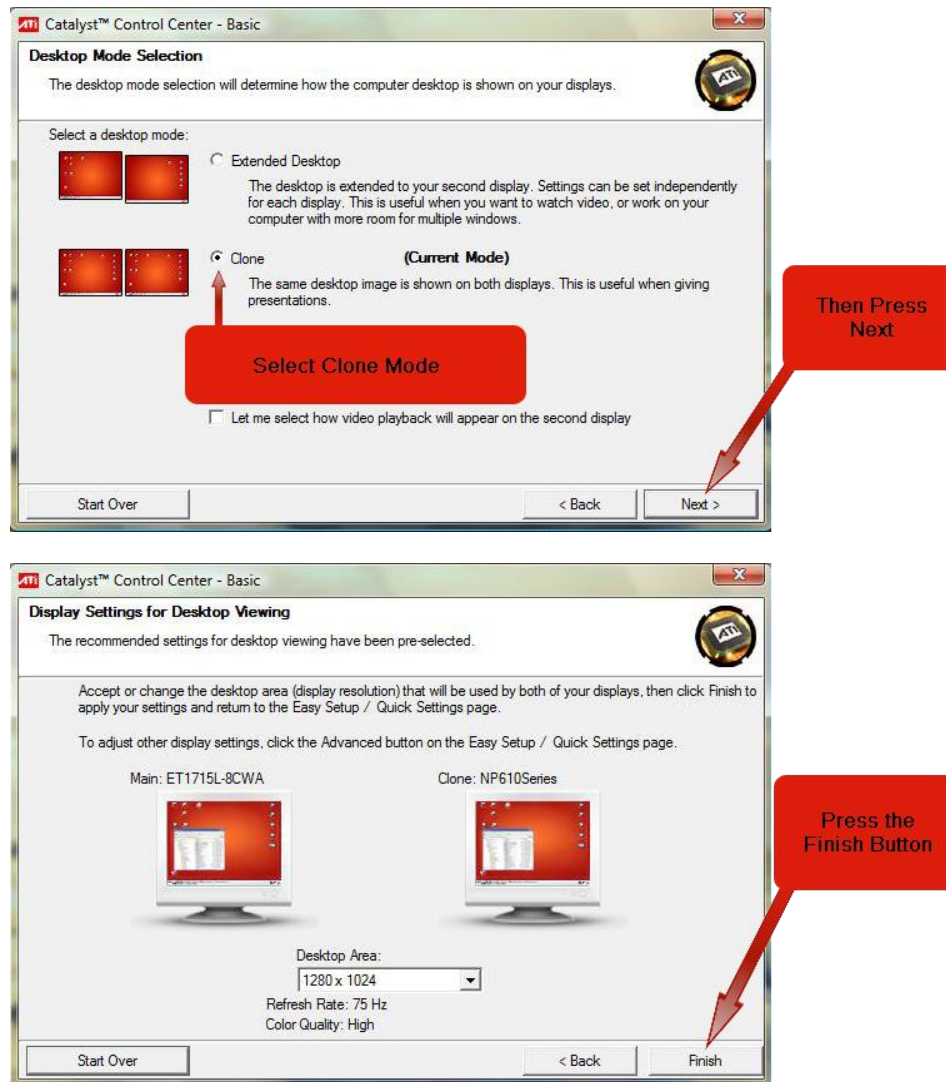
Buttons: < Back, Next >

Callout: Step 1: Select a Main Display (points to the selected main display radio button)

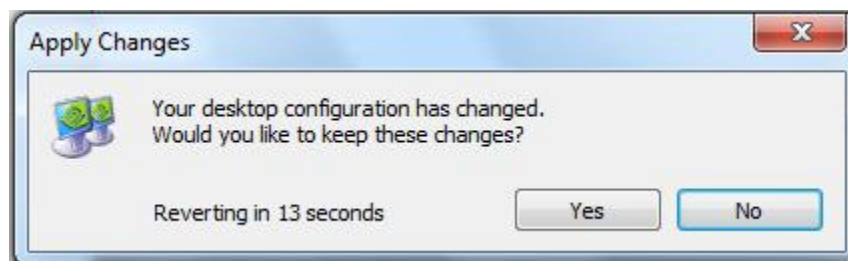
Callout: Step 2: Select a Secondary Display (points to the selected secondary display radio button)

Callout: Step 3: Press Next (points to the Next > button)





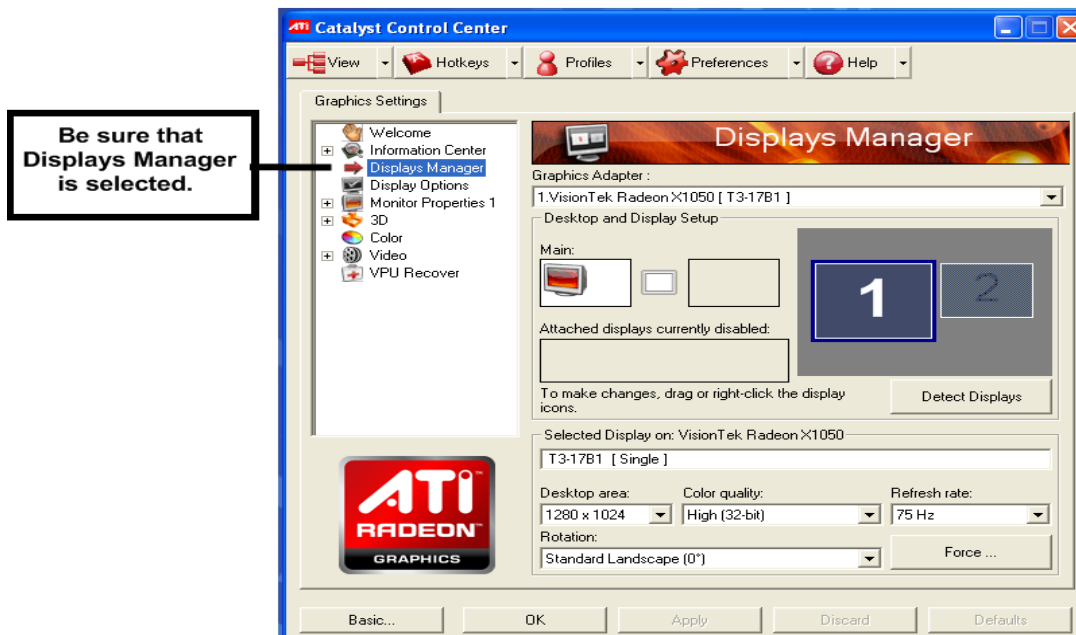
If prompted to save settings, be sure to press 'Yes':



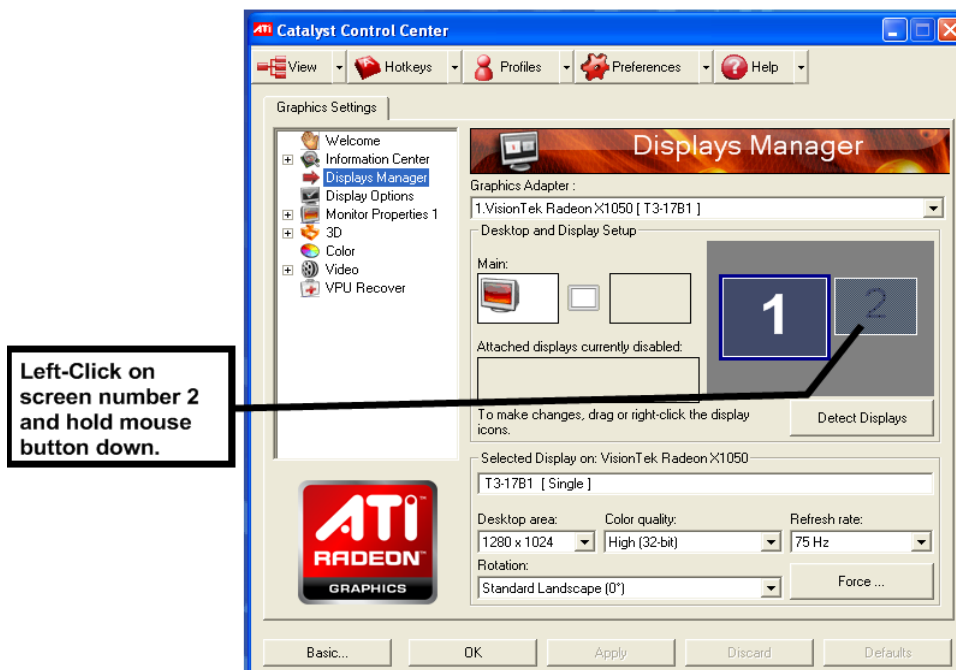
That's all. You've successfully cloned the monitors and they should appear identically now.

## ATI Catalyst Control Center (known as CCC) – Advanced Mode:

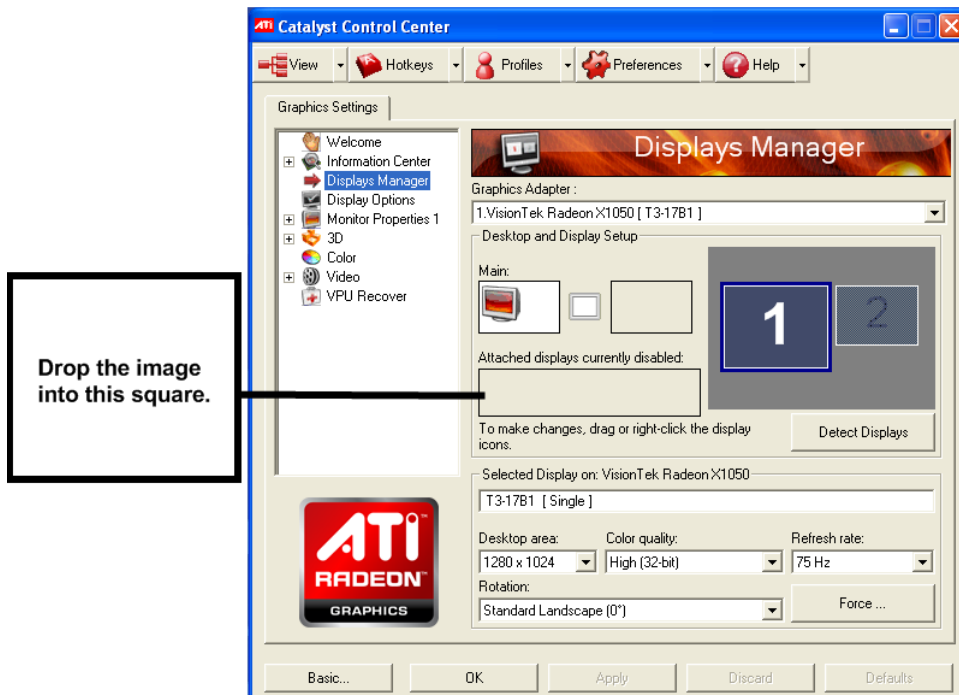
1. When you open the ATI CCC, you will see the following window. Be sure that the Displays Manager is selected. If it is not, then select it.



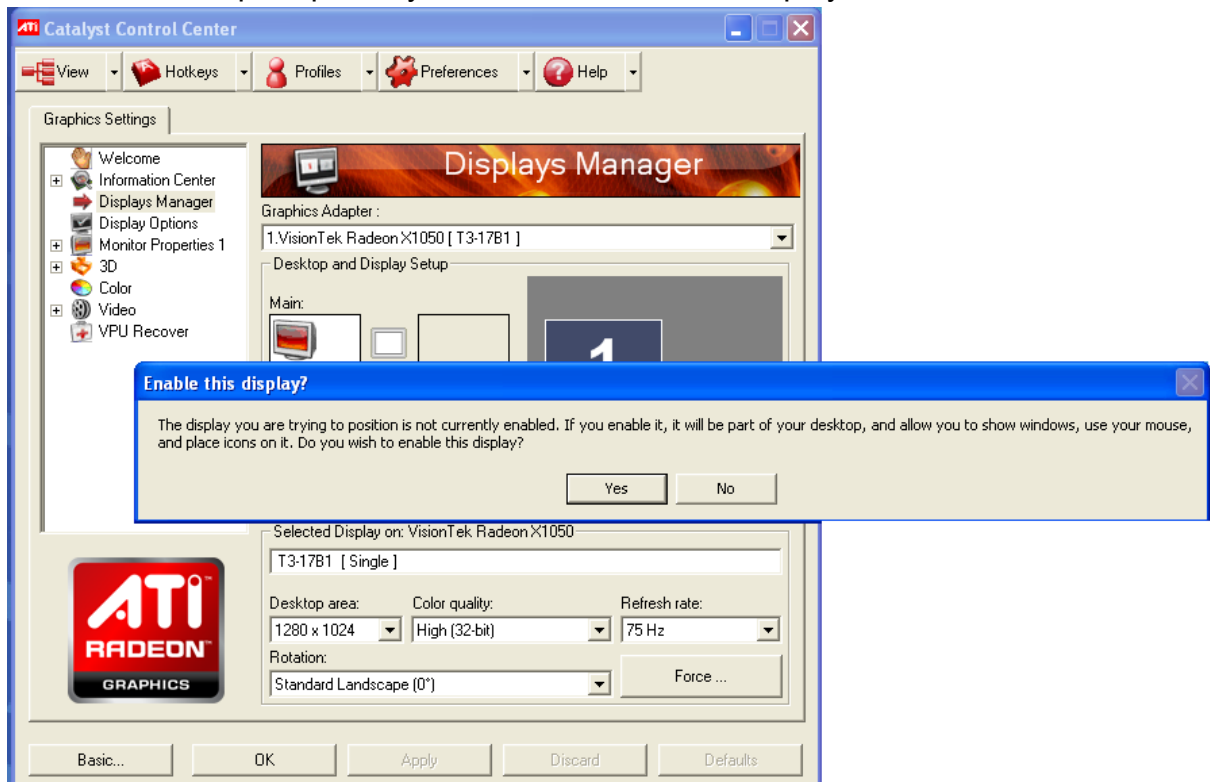
2. You then need to enable display 2, by selecting the box with the '2' in it and dragging it to the 'Attached displays currently disabled' box.



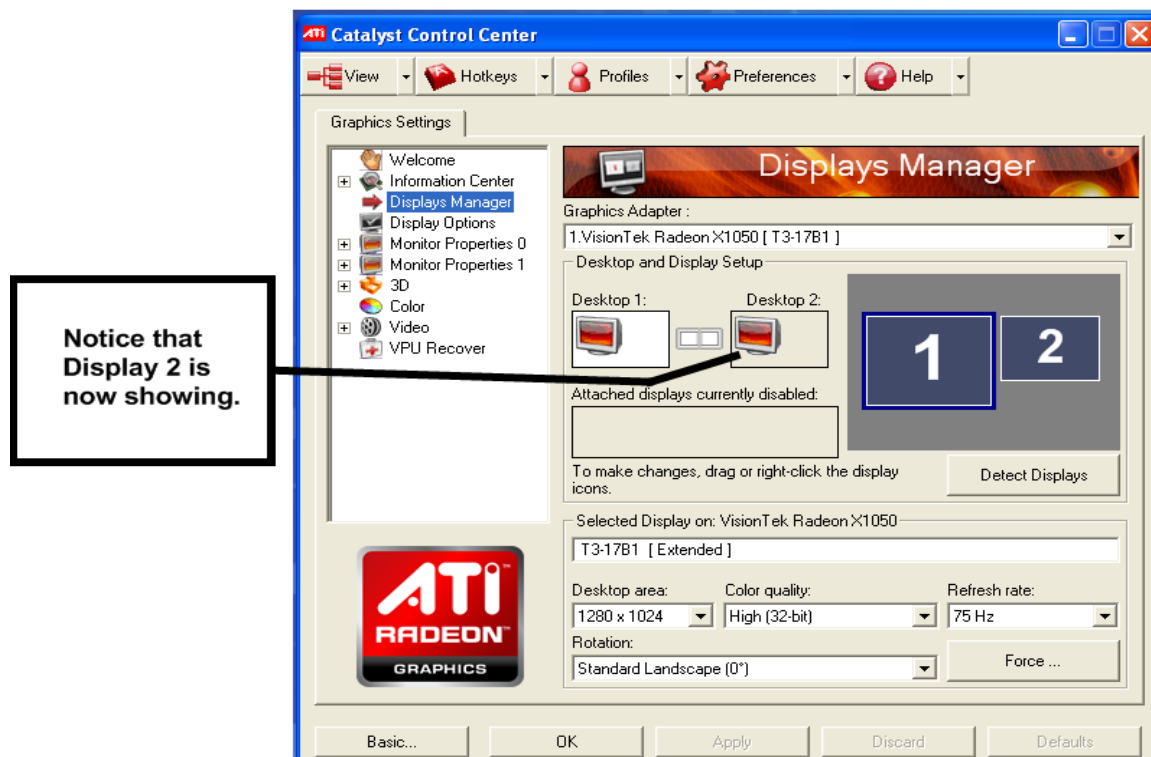




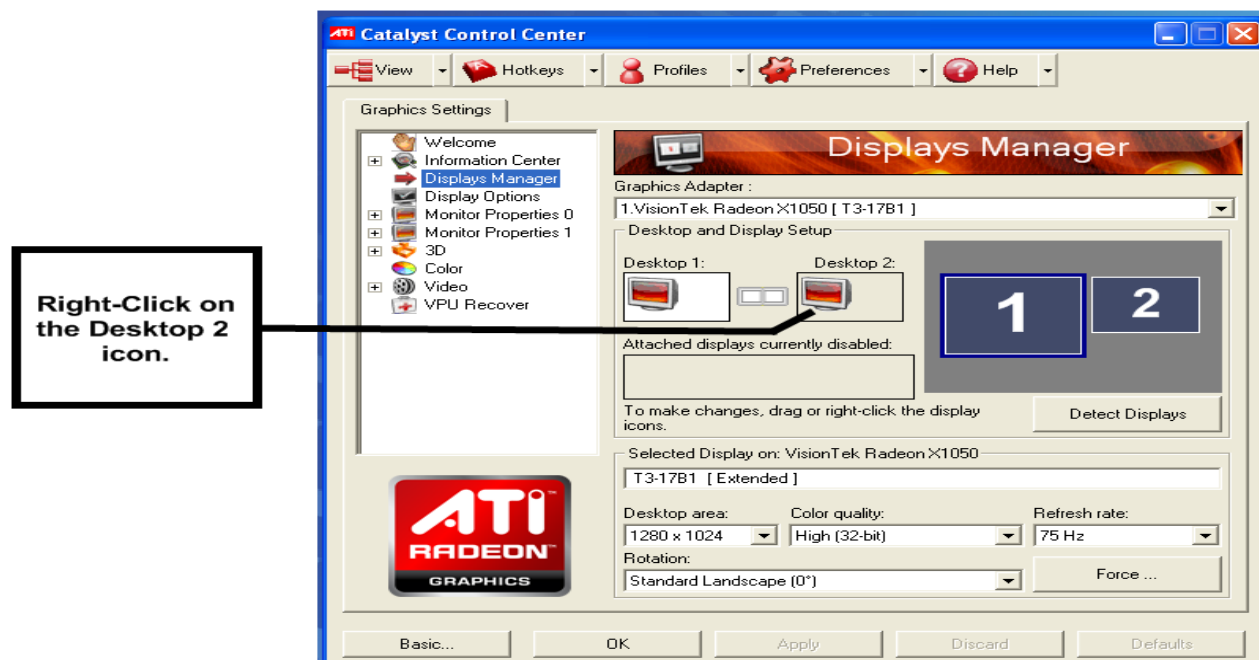
3. You will then be prompted if you'd like to enable the display.



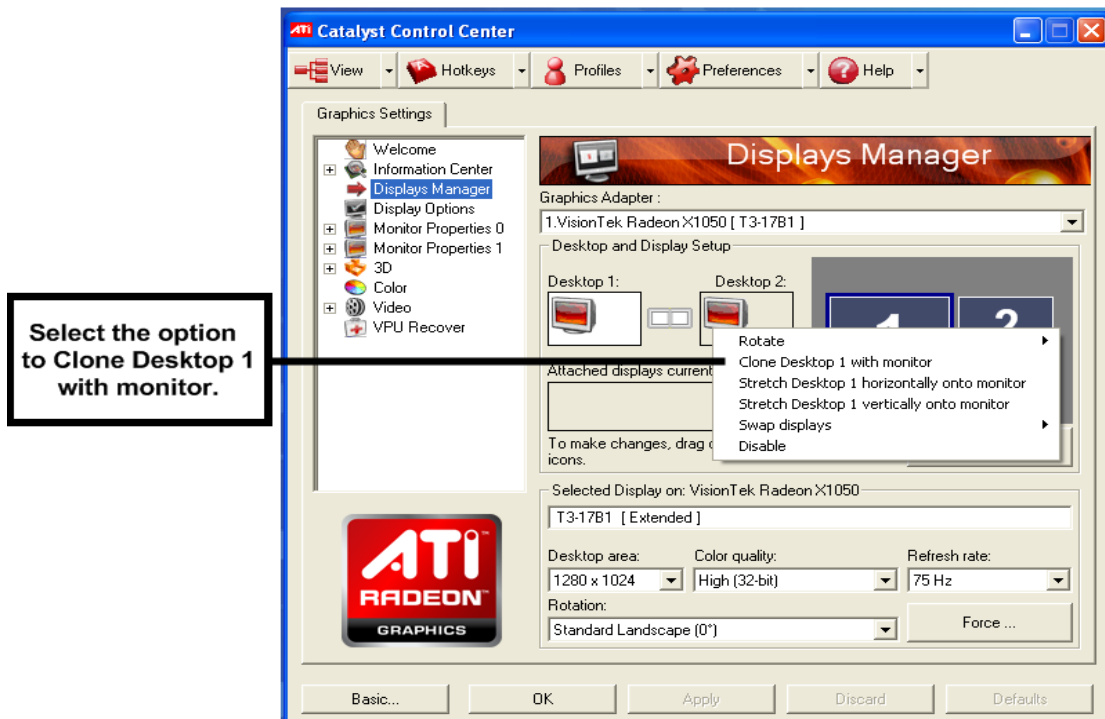
4. Select 'Yes' to enable the 2<sup>nd</sup> display.
5. You will now notice that Display 2 is present in the Desktop and Display boxes.



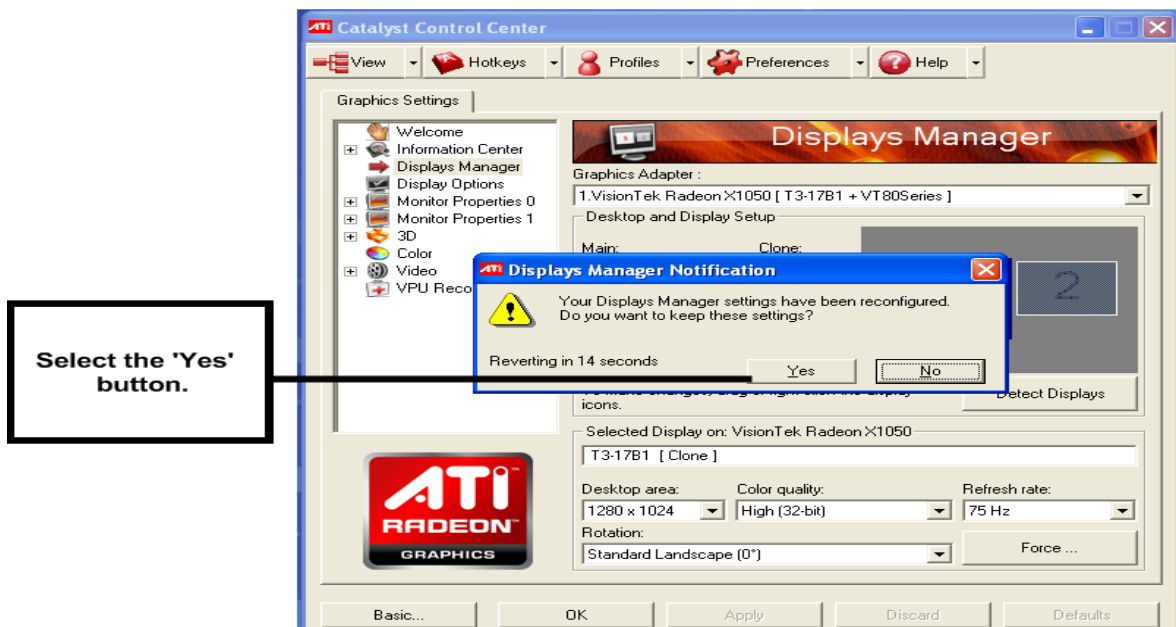
6. Now that the computer is aware that there are 2 displays active, let's clone them so they have the same image on both. Right-click on the Desktop 2 icon.



7. You will get the following menu when you do so:

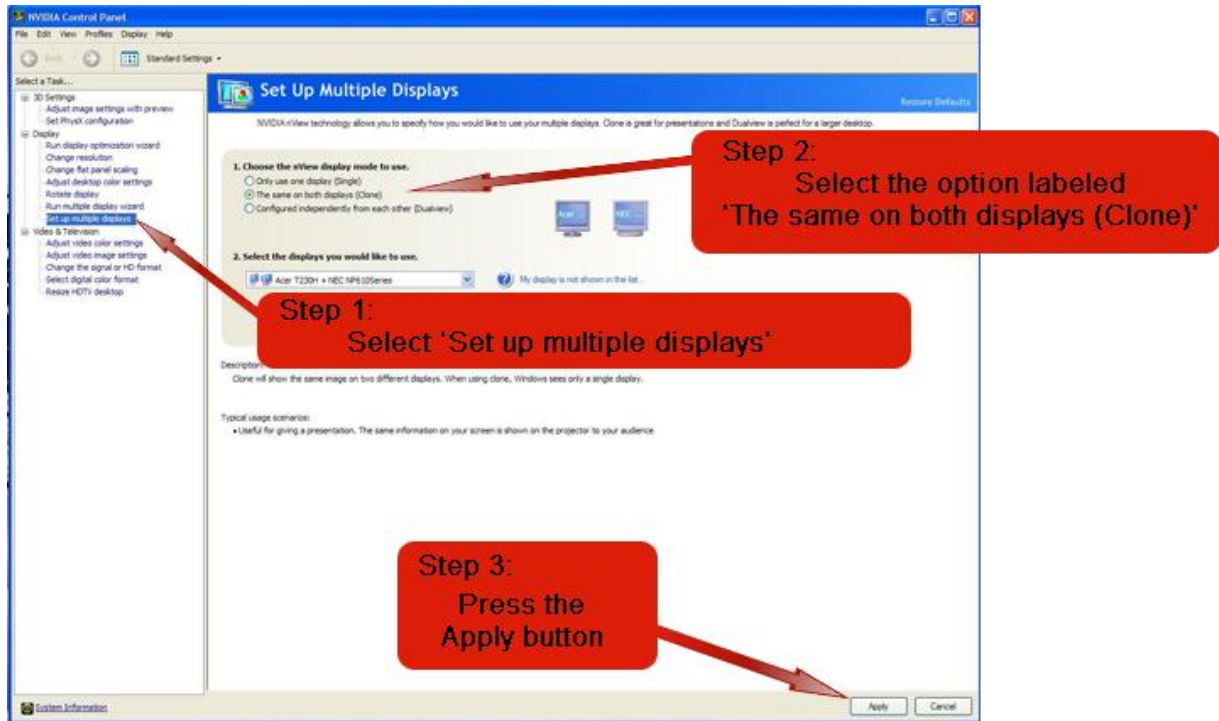


8. When you select the 'Clone Desktop 1 with monitor', the screen will flash and when it re-appears you'll be prompted to save your changes. Select the 'Yes' button.

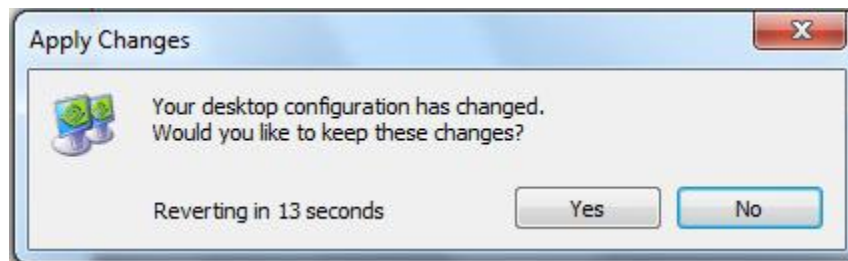


9. That's all. You've successfully cloned the monitors and they should appear identically now.

## NVIDIA Control Panel (Option 1):

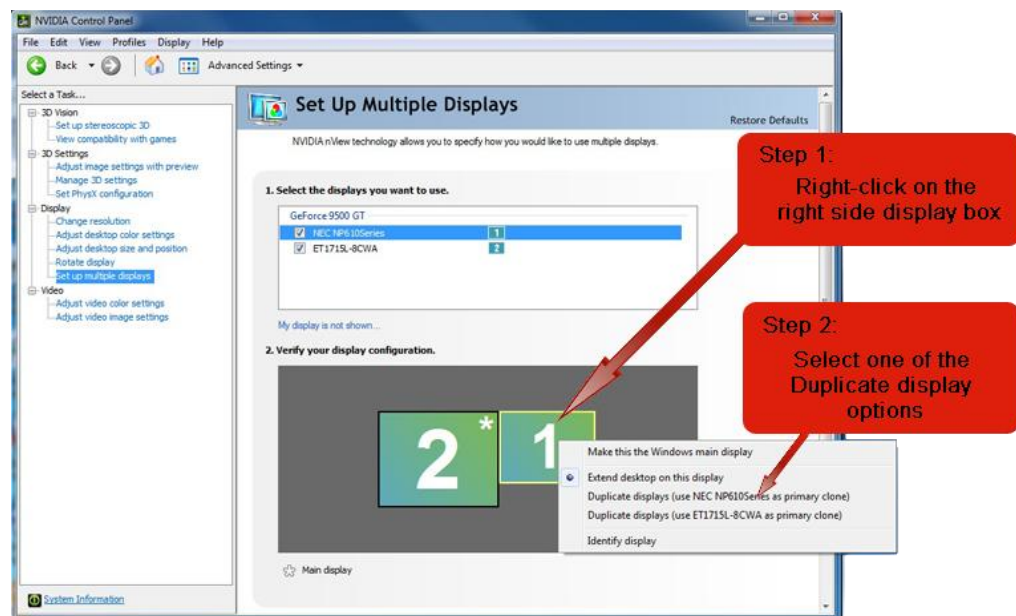
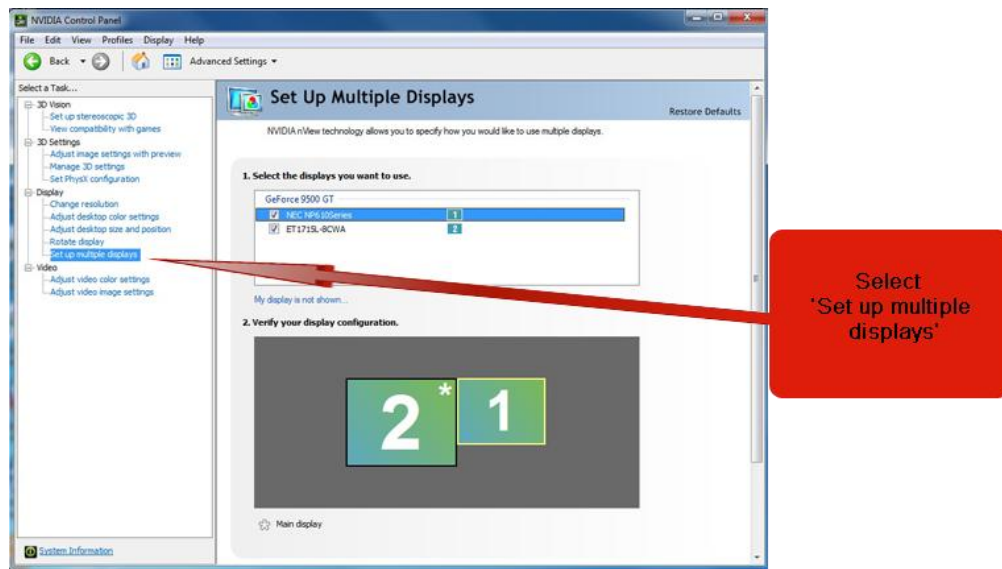


When prompted to Save Setting changes, select 'Yes':

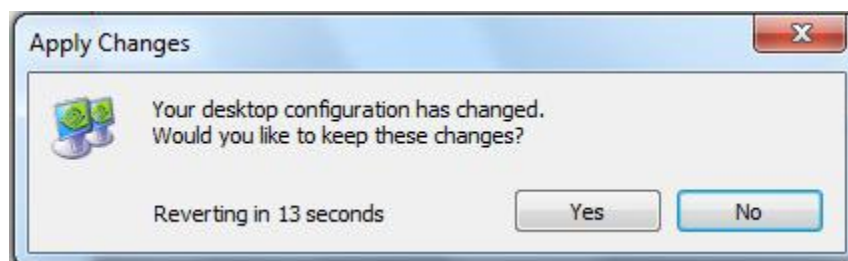


That's all. You've successfully cloned the monitors and they should appear identically now.

## NVIDIA Control Panel (Option 2):



When prompted to Save Setting changes, select 'Yes':



That's all. You've successfully cloned the monitors and they should appear identically no