



Dear Customer,

Thanks for your purchase of the P<sup>3</sup>ProSwing Masters Package. Enclosed you will find all the necessary documents to setup your package. Once you have setup the package, you can access the program via the P<sup>3</sup>ProSwing Golf (Swing Analysis Software) and P3 ProGolf (Course Software) icons on your desktop. All necessary software has been pre-installed on the computer and configured for you. The User Manuals for the P<sup>3</sup>ProSwing Swing Analysis software and P3 ProGolf software are installed on the computer and you will find an icon for each on the desktop.

If you still have questions, after referencing the manuals, you can contact our Technical Support Department.

---

P<sup>3</sup>ProSwing Technical Support  
Monday – Friday from 9 AM to 4 PM EST  
207-824-7411  
[tech@p3proswing.com](mailto:tech@p3proswing.com)  
<http://support.p3proswing.com>

---

For purchasing supplies or other products, you can contact our Sales Department.

P<sup>3</sup>ProSwing Sales Department  
Monday – Friday from 9 AM to 4 PM EST  
1-877-737-7646 (US Only)  
1-207-824-7403  
[sales@p3proswing.com](mailto:sales@p3proswing.com)

Thanks again for your purchase,

P<sup>3</sup>ProSwing Management



## Shipment Contains:

**Box 1: Inner Screen For Hitting Center**

Screen and ropes

**Box 2: Outer Cage Cover for Hitting Center**

**Box 3: Pipe Box #1 For Hitting Center**

18 Pipes @ 6'

**Box 4: Pipe Box #2 For Hitting Center**

12 Pipes @ 5', 4 Pipes @ 6', 5 Pipes @ 4-1/2', 5 Pipes @ 1-1/2'

**Box 5: Fittings For Hitting Center**

9 FC, 6 FL, 4 F4, 8 FT, 3 FX, 2 F3, 10 Guy Wires, 1 projector mount (See cage instructions for description)

**Box 6: Versa Stance Mat**

Mat and Channel Guard

**Box 7: Ambi Stance Mat**

Mat and Velcro

**Box 8: Putting Mat**

Mat and Velcro

**Box 9: Putting Mat**

Mat and Velcro

**Box 10: Projector Pack For Hitting Center**

Projector, mount, Power Strip, Extension Cord, SVGA Cable, DVI-VGA Adapter, HDMI Cable

**Box 11: Pre-Configured Computer**

Computer, Mouse and Keyboard

**Box 12: Touch Screen Monitor**

**Box 13: Sensor Unit 1 & Video Capture Supplies**

Welcome Kit with instructions, software and information, P3ProSwing sensor pad, Power Supply, USB Cable, Goodie Bag, Club Tape, Friction Tee, Video Capture Cameras and USB Extension Cables (1 for each camera)

**Box 14: Sensor Unit 2 & Launch Angle Kit**

P3ProSwing sensor pad, Power Supply, USB Cable, Goodie Bag, Club Tape, Friction Tee, Launch Angle Base, Camera Screw, Camera, Flashlight & Batteries

# Masters Package Setup Overview Instructions



1

Setup Cage using the enclosed 12' Cage Instructions.  
(Boxes 1 through 5)

2

Setup stance & putting mats per instructions.  
(Boxes 6 through 9)

3

Setup Computer System.  
(Box 10 & 11)

4

Install projector to projector mount on cage.  
(Box 12)

5

Install sensor units in mats and attach to computer.  
(Box 13 & 14)

If you have any questions or problems, you can contact:

**P<sup>3</sup>ProSwing Technical Support**

**Monday – Friday: 9AM to 4PM Eastern Time**

**207-824-7411**

**[tech@p3proswing.com](mailto:tech@p3proswing.com)**

**<http://support.p3proswing.com>**

## 12' Cage Setup Instructions

---



## Bill of Materials:

Item Description	Qty
6' Pipe	22
5' Pipe	12
18" Pipe	5
4'6" Pipe	5
FC	9
FL	6
FT	8
FX	3
F3	2
Side Wire (black)	4
Side Wire (black/red)	4
Rear Guy Wire (red)	2
Projector Mount Receiver	1
Rope	5
13" Toggle Balls	1 Pack

**Pipes, Toggle Balls and Ropes  
are not pictured**



**FC**



**FL**



**F4**



**FT**



**FX**



**F3**



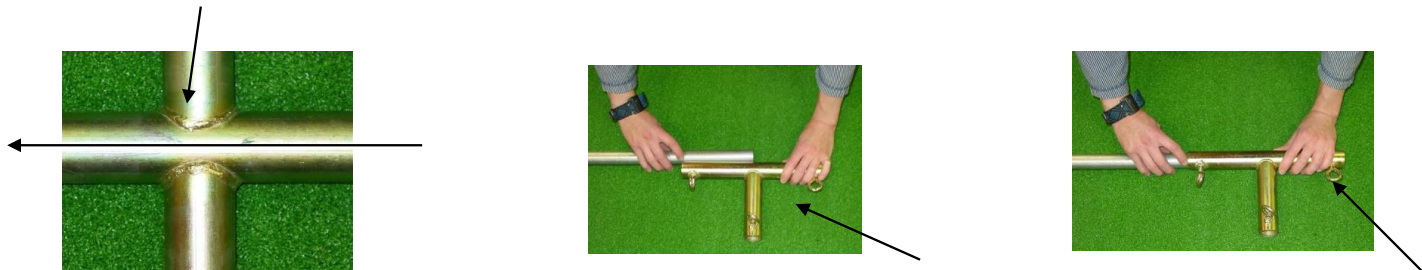
**Wire Sets**



**Projector Mount Receiver**

## Important Notes

- 1) The 5' long pipes are for vertical sections only. The cage is 10' 3" tall.
- 2) The FX cross fittings should be oriented with the slide through running front to back.

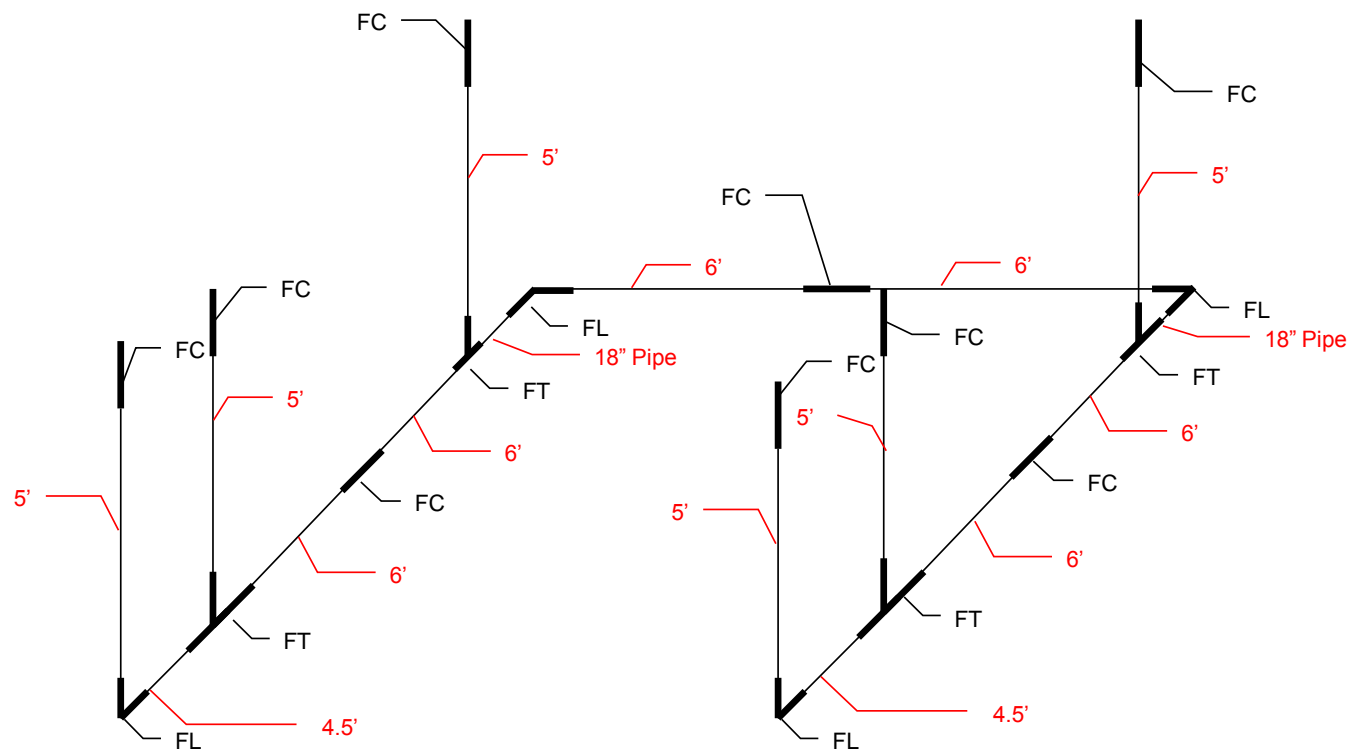


- 3) When placing the pipe in the FC, FT & FX fittings, first lay the pipe next to the fitting, estimate where the pipe should stop to be centered. Either mark with a pen or hold your finger on the estimated stop point. Insert the pipe to this point and tighten the screw eye. Centering the pipes in the FC, FT & FX fittings will help keep the cage square.
- 4) There are two covers for this cage. The first cover, which is the inner cover, has the white impact projection screen built in. There are grommets on both ends of the screen. There are also grommets for the front sides and front top. Included rope is to be threaded through the grommets and around both vertical poles at the back end of the cage, both vertical poles on the front sides and the horizontal pole on top.
- 5) This will need to be loosened and tightened as the cage is assembled to keep the impact projection screen square. You should note that the screen should not be extremely tight so you avoid balls trampolining off the screen. You want enough slack that the balls will hit the screen and lose momentum, yet not so slack that the image is not clear. It will be easier to put the second, outer cover, with the P3ProSwing Logo, on after the top frame is assembled. This should be done before the top half of the cage is raised into place.

## Step 1

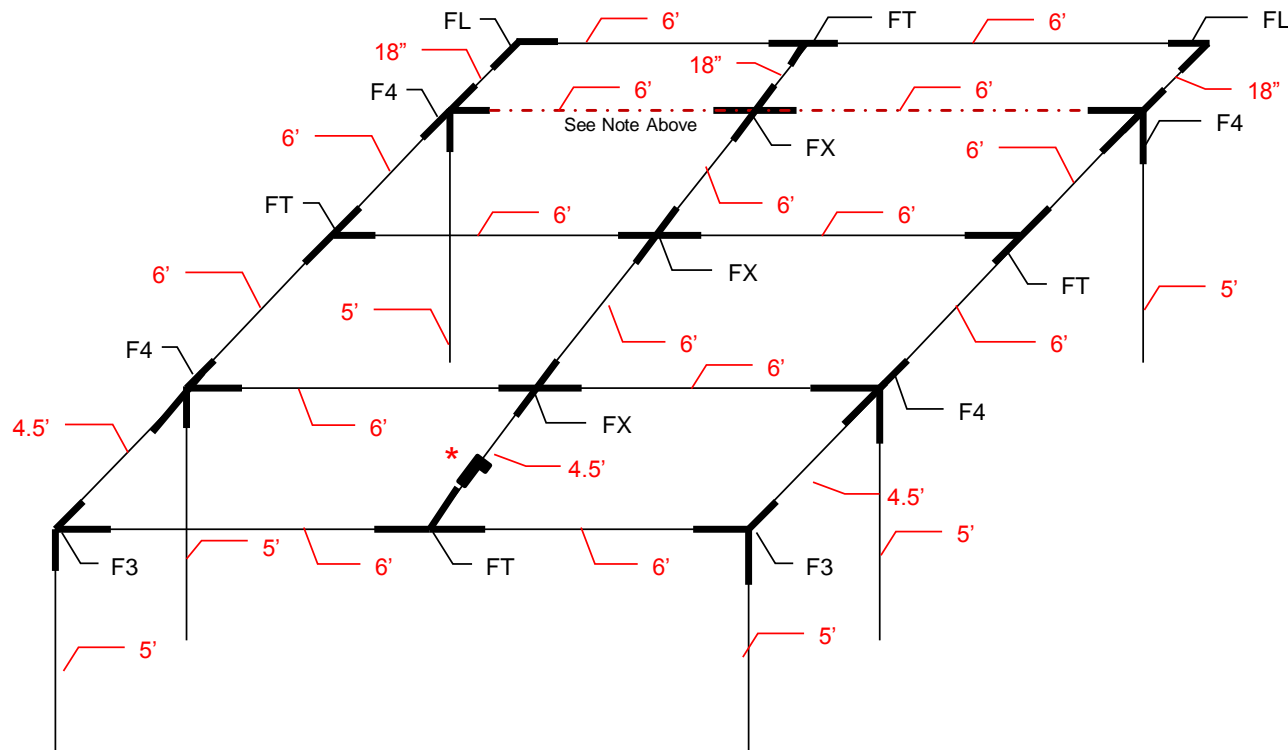
### Build Bottom Frame

(Place the frame in the location you plan on using it.)



----- The loops on the top of the screen should attach to this pole using the 13" toggle balls.

## Step 2 Build Top Frame



**Notes:** On FX & FT fittings, make sure the screw eyes are pointing up. They should not protrude down into the cage.

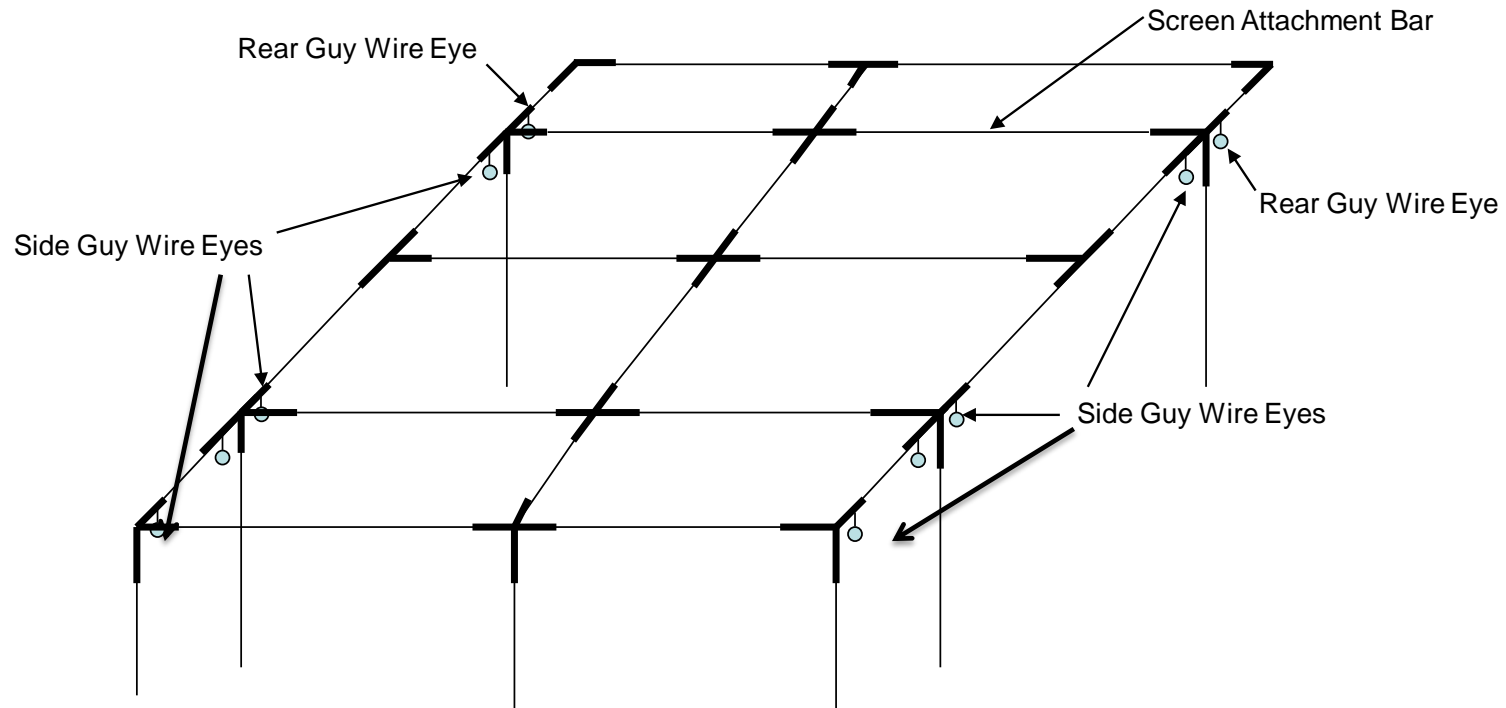
It is easier to attach the inside projection screen and cage cover to the top frame before lifting it into place on the bottom frame. Otherwise, everything must be done using ladders. Locate the Velcro loops and attach to the back end of the frame, then the middle and edges.

\* Be sure to attach projector mount to pipe during assembly of top frame



### Step 3

#### Attach Guy Wires and Projection Screen to Top Frame



1. Attach caribiner end of Guy wires to top frame. (See step 6 for details)
2. Unfold cover with the projection screen inside the rear of the cage frame.
3. The projection screen has a rope cord that weaves down the edges and around the pole.
4. The Front Sides & Top also use rope weaved between the grommets and pipe to keep them taunt.
5. Close the Velcro flap over the Projector mount.

## **Step 4**

### **Install Cage Cover on Top Frame**

1. Unfold the outer cage cover.
2. Locate the P3ProSwing Logo. This is the center of the front of the cage.
3. Place the fitted corners around the two rear cage corners.
4. Gather the fabric from the back of the cover to the front on each side (this requires 2 people).
5. With a person on each side of the cage, walk the cover from back to the front unfurling the fabric as you go.
6. Allow the back flap to drape over the rear of the cage.
7. At the front of the cage, fold the extra fabric, for the projection awning, over the top of the cage front to allow access to the fittings after the cage frame has been lifted.
  - Note: This will make the top of the cover fairly taut
8. This is a good time to secure the wiring for the projector to the frame. Allow extra wiring for the proper distance and strain relief of the projector mounting location.
9. If you have not already fastened the sides and top, wrap the front portion of the inner corner around the front pipe and use rope through the grommets to attach to next pole.

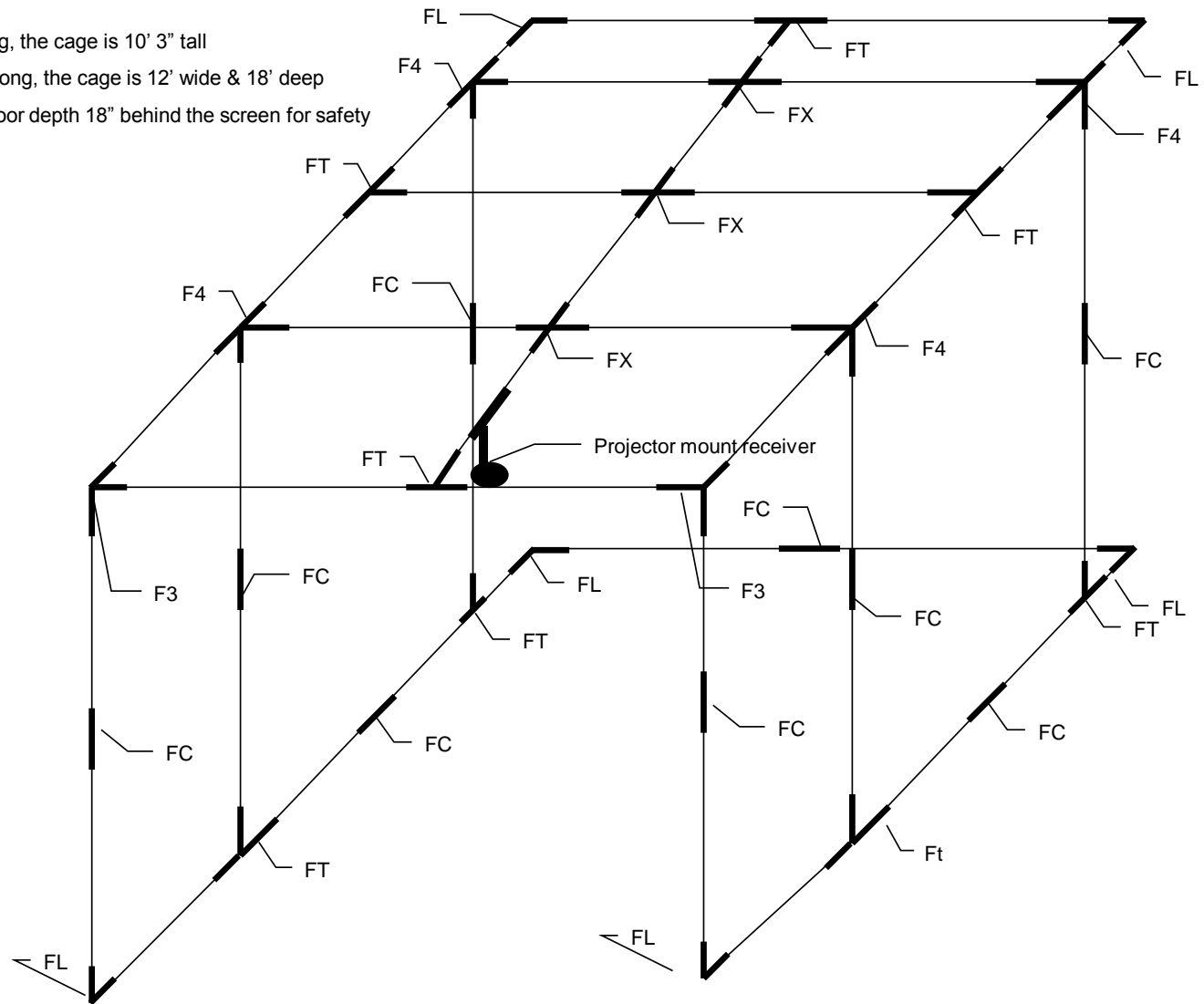
## **Step 5**

### **Lift the Top Frame Into the Bottom Frame**

- 1) Lift top frame by corners and set it into bottom frame (four to six people will be optimal for this operation)
- 2) Make sure all fasteners are fully seated and secure before proceeding.

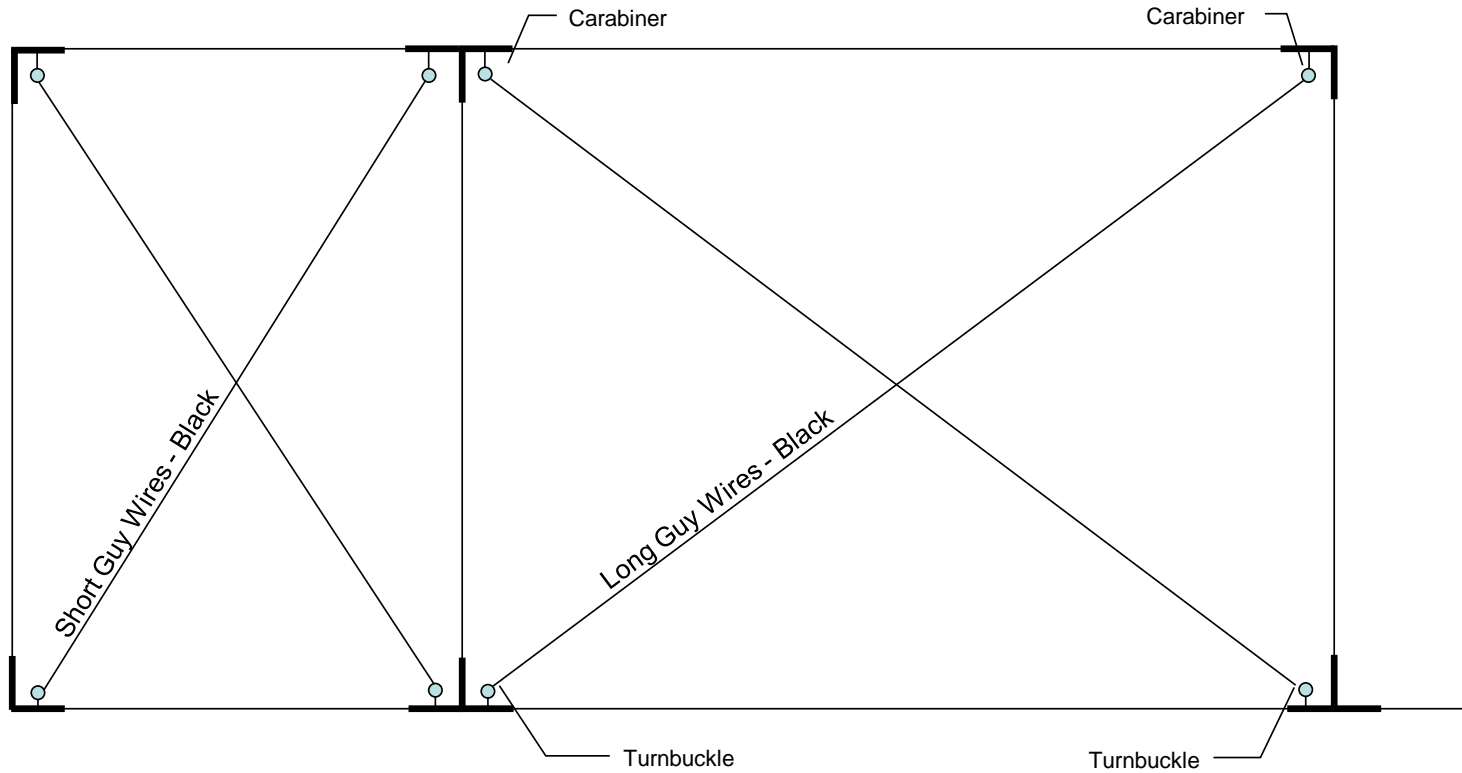
## Notes: Overview of Cage Fittings & Pipes

- 12 vertical pipes are 5' long, the cage is 10' 3" tall
- 22 horizontal pipes are 6' long, the cage is 12' wide & 18' deep
- 5 short pipes extend the floor depth 18" behind the screen for safety purposes



## Step 6

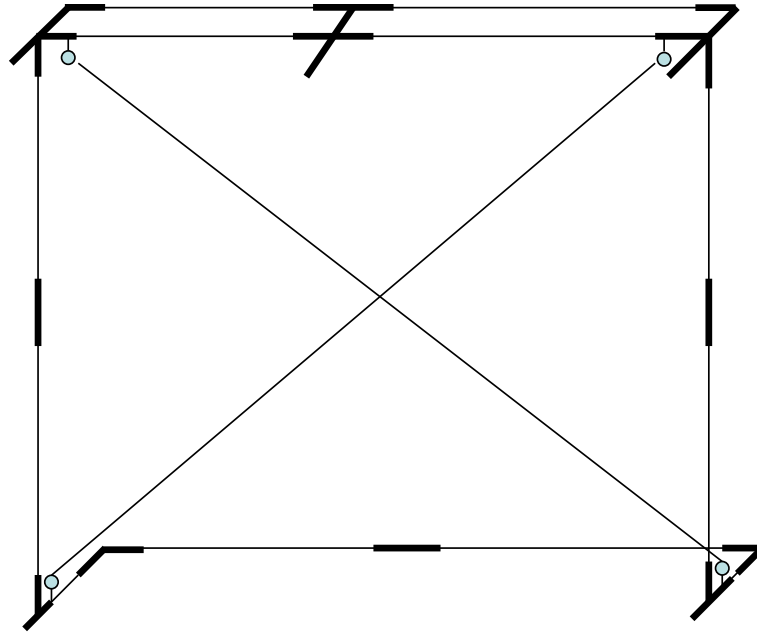
### Install Side Guy Wires (Both Sides)



- 1) Attach side guy wires with carabiners at the top on the screw eyes as shown.
- 2) Fully open and attach turnbuckle to bottom screw eyes as shown.
- 3) Do not tighten turnbuckles yet!

## Step 7

### Install Rear Guy Wires



- 1) Attach rear guy wires with carabiners at the top on the screw eyes as shown.
- 2) Fully open and attach turnbuckle to bottom screw eyes as shown.
- 3) Tighten turnbuckles of all 10 wires starting with the rear so there is tension in wire, do not over tighten or the cage will not be square.
- 4) Tighten turnbuckles on sides after finished tightening rear turnbuckles.

## **Step 8**

### Finish Installation of the Projection Screen

- 1) Finish running the rope through the grommets and around the back vertical poles and tie securely.
- 2) The screen is designed to be slack and 'deaden' the ball on impact. You should be able to push on the edges of the screen without straining the stitches that connect the white impact screen to the black fabric material. If the screen is too taut, the ball will have a 'trampoline effect' on impact. This will also cause the screen to rip on or near the seams.
- 3) Slip the outer cover under the frame and wrap around front poles securing with the Velcro that runs down the edge.
- 4) Make any necessary adjustments.

# Masters Package Mat Installation Guide



1

Identify the location for your Stance Mats (Versa Mat & Ambi Mat). Be sure they are far enough away from the screen so the golfer is not struck by a ball, but not so far back that the user will strike the projector with their swing.

2

**NOTE:** There is a white indicator on the side of the cage. The ball location on the sensor unit should be behind this mark. Again, be sure you are not too far back that the golfer's swing will hit the projector.

3

Follow the enclosed instructions to setup the Versa & Ambi Mat (Ambi Hitting Mat Velcro Installation).

4

Setup the Putting Strips per the Putting Strip Velcro Installation instructions enclosed.

5

Your finished mat system should look like the image below:



If you have any questions or problems, you can contact:

**P<sup>3</sup>ProSwing Technical Support**

**Monday – Friday: 9AM to 4PM Eastern Time**

**207-824-7411**

**[tech@p3proswing.com](mailto:tech@p3proswing.com)**





## Versa & Ambi Mat Velcro™ Installation

The Velcro™ (a.k.a. hook & loop fastener) included in this package is to hold together the Versa Hitting Mat and the Ambi Hitting Mat you purchased for your P<sup>3</sup>ProSwing.

Included with the Ambi Hitting Mat is:

4 pieces of LOOP (fabric with adhesive backed tape) that are 20" long and 2" wide

2 piece of HOOK (plastic with no adhesive backed tape) that is 20" long and 4" wide

- Flip the Versa Hitting Mat over so that the foam is facing up
- Flip the Ambi Hitting Mat over so that the foam is facing up and place it in the correct position lined up with the Versa Hitting Mat on the side with the P<sup>3</sup>ProSwing unit cutout.
- **Notice:** The Ambi Hitting Mat has a cutout through the foam that allows the wires from the P<sup>3</sup>ProSwing to exit through the front of the Ambi Hitting Mat. The Ambi Hitting Mat needs to be positioned so that the wires exit the Ambi Hitting Mat facing in the direction of the ball flight.
- Make sure that the foam is clean and dry before applying LOOP tape.
- Once the 2 mats are in the correct position, take 2 pieces of LOOP tape and remove the backing exposing the adhesive.
- Place 1<sup>st</sup> and 2<sup>nd</sup> pieces on the Versa Hitting Mat. The Strip should be started at the corner of the mat and run out close to the wire cutout in the middle of that edge. Press firmly along the length of the LOOP tape to ensure good adhesion.
- Repeat above step for the pieces on the Ambi Hitting Mat.
- Move the Ambi Hitting Mat away from the Versa Hitting Mat.
- Apply the 2 HOOK pieces over the LOOP on the Versa Hitting Mat making sure that ½ of the HOOK strip is overhanging the edge of the right mat and press firmly along the length of the hook & loop fastener.
- Flip the Versa Hitting Mat over right-side-up. Install Channel Guard in left side channel guard opening.
- Place Ambi Hitting Mat in position next to the Versa Hitting Mat and press Ambi Hitting Mat firmly in place on the hook strip that is beyond the edge of the Versa Mat.

You are now ready to use the Ambi Hitting Mat and Versa Hitting Mat combination.



## Putting Strip Velcro™ Installation

The Velcro™ (a.k.a. hook & loop fastener) included in this package is to hold together the Putting Strip your other Stance Mat(s) you purchased for your P<sup>3</sup>ProSwing.

Included with the Putting Strip is:

**2** pieces of LOOP (fabric with adhesive backed tape) that are 10" long and 2" wide

**1** piece of HOOK (plastic with no adhesive backed tape) that is 10" long and 4" wide

- Flip the Putting Strip over so that the foam is facing up and place it in the correct position lined up with the P<sup>3</sup>ProSwing unit cutout.
- **Notice:** The Putting Strip has a direction line printed on it that is not centered. Ensure that the line on the Putting Strip is properly aligned with your other stance mat line(s).
- Make sure that the foam is clean and dry before applying LOOP tape.
- Once the Putting Strip is in the correct position, take 1 piece of LOOP tape and remove the backing exposing the adhesive.
- Place 1<sup>st</sup> piece on the Putting Strip centered along the edge closest to the Stance Mat and press firmly.
- Remove backing exposing glue on the 2<sup>nd</sup> piece of LOOP tape and it on the Stance Mat lined up with the piece previously installed on the Putting Strip.
- Move the Putting Strip away from the Stance Mat.
- Place the HOOK strip over the LOOP tape on the Stance Mat making sure that ½ of the hook strip is overhanging the edge of the Stance Mat and press in firmly.
- Flip the Stance Mat over Right side up.
- Place Putting Strip in position lined up with the direction line on the Stance Mat and press Putting Mat firmly in place.

You are now ready to use the Putting Strip and Stance Mat combination.

# P<sup>3</sup>ProSwing Pre-configured Computer Setup Instructions



- 1 Identify an ideal location for your computer & touch screen. Note that this must be within 15' of your sensor pads. It is also recommended that this location be behind the ball location.
- 2 Connect the projector & touch screen cables using the instructions in the Cloning Instructions enclosed.
- 3 Connect the applicable USB Cables (from touch screen, sensor units, keyboard, mouse, speakers and cameras) based on what you purchased to any available USB Ports on the computer. It is strongly recommended that you connect the cameras to the upper USB Ports.
- 4 Turn the computer on.
- 5 All applicable P<sup>3</sup>ProSwing software (including drivers for the P<sup>3</sup>ProSwing and peripherals purchased) and other necessary software have been pre-installed on the computer.
- 6 If you do not get the same image on both the monitor and projector, follow the instructions in the Cloning Instructions.

If you have any questions or problems, you can contact:

**P<sup>3</sup>ProSwing Technical Support**

**Monday – Friday: 9AM to 4PM Eastern Time**

**207-824-7411**

**[tech@p3proswing.com](mailto:tech@p3proswing.com)**

# Cloning the Touchscreen to the Projector

*(for when only 1 is displaying the desktop)*

The easiest way to avoid having to do this, is to be sure that both the Touch Screen monitor cable and the Projector cable are plugged into the computer prior to starting the system. If at any time you start the system with only 1 display attached, it will lose the 'cloning' information and you will have to follow this procedure to reset it.

## Connecting to the computer:

First – Let's be sure you have connected the Projector & Monitor to the computer properly. Generally when you install a video card into a computer, the onboard video adapter is disabled. So both the projector & monitor must be plugged into the installed video card (see image to right).

Note that some computers and/or devices will require the use of a DVI-to-VGA adapter to make the appropriate connection(s). See image below for a sample of this adapter:



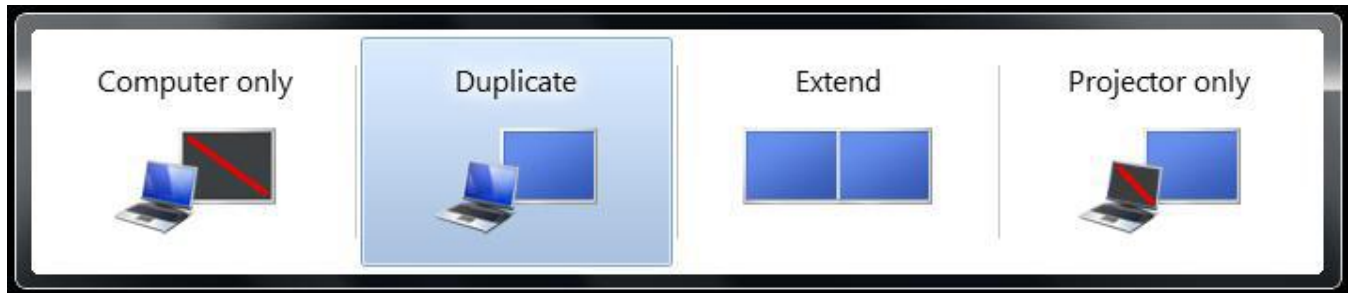
## Connecting to the projector:

Be sure that when you connect to the projector that you are connected to the 'Computer 1 In' connection. You should also press the 'Computer 1' button on the remote. You should see an image in the upper right corner of your projection screen that will say 'Computer 1'. It will, generally, tell you if it is not receiving a signal by putting 'No Input' under the 'Computer 1' indicator.

## Windows 7 Setup:



1. Click the Windows Start Button in the bottom left corner of the screen
2. Click on All Programs
3. Click on Accessories Folder
4. Select 'Connecting to a Projector'
5. Select Duplicate from the window that appears:



**All our computers come with Windows 7.**